



# TACTICAL SQUAD

COMPLETE PRODUCT GUIDE  
**2018**



# TACT SQUAD

Proudly designing and manufacturing quality uniforms for first responders across the United States for over 17 years.

Tact Squad is a leading uniform manufacturing company that specializes in law enforcement and public safety uniforms, duty gear, footwear and accessories.

Based out of our corporate headquarters in beautiful Corona, California, it is our mission is to provide the brave men and women who wear our uniforms durability and dependability that match the same standard of performance that they are held to.

Because we own and operate our own factories both in the United States and overseas, it allows our focus remain in providing quality products to users that meet and exceed the strictest of manufacturing specifications.

## ICON LEGEND:



POLICE / SECURITY



FIRE



EMERGENCY MEDICAL SERVICES



TACTICAL



TRANSIT



NYPD APPROVED



INDUSTRIAL LAUNDRY FRIENDLY

Combine the item number and the color code to determine the correct SKU for ordering:

Part Number    Color Code    Product SKU  
**T7512 + KH = T7512KH**

**T7512** Lightweight Ripstop Tactical Trousers  
Colors: DN, BK, **KH**, OG, BR | Size charts - E2

**DN** DARK NAVY    **BK** BLACK    **KH** KHAKI



**04/ NEW ITEMS**  
**06/ SHIRTS**  
**18 / TROUSERS**  
**28/ OUTERWEAR**  
**42/ FOOTWEAR**  
**46/ DUTY GEAR**  
**50/ BAGS**  
**56/ ACCESSORIES**  
**64/ INDEX**  
**66/ SIZE CHARTS**





**NEW DESIGN**

**TACT SQUAD**

**JOB SHIRT 2.0**

PG. 31

- › Fabric: 80% Cotton / 20% Polyester
- › Fleece inner lining
- › Lower placket mic tab
- › Dual shoulder mic tabs
- › Concealable D-ring
- › Dual hidden chest pockets
- › Patch friendly pen pockets
- › Large elbow canvas patches
- › Dual lower hand pockets
- › Matching collar
- › Machine wash or dry clean

**2005 | Men's Job Shirt 2.0**

Colors: N | Size Charts - N \*No XXS, 6X

**N** NAVY



**TACT SQUAD**

**TG850 LED FLASHLIGHT**

PG. 61

- › Max Output 850 Lumen
- › Water resistant
- › Impact resistant 1.5m
- › Weight 2.73 ounces (77.5 grams) without batteries
- › Uses one (1) 18650 Li-Ion or two (2) CR123A batteries
- › Digitally regulated output - maintains constant brightness
- › Slip-resistant body design
- › Made of durable aircraft grade aluminum
- › Premium hard-anodized anti-abrasive finish
- › Toughened ultra-clear glass lens with anti-reflective coating
- › Tactical lanyard with two replacement O-rings

**TG850 | LED Flashlight**



**TACT SQUAD**

**6" AND 8" SENTRY SIDE-ZIP BOOTS**

PG. 45

- › Leather / Nylon upper
- › Heavy-duty YKK® side zipper with hook and loop closures
- › Tact-Step™ cushioned removable insole
- › Slip and skid resistant outsole
- › Padded collar for added comfort

**S300 | 6" Sentry Side-Zip Boots**

Colors: BK | Size Chart: Shoes

**S310 | 8" Sentry Side-Zip Boots**

Colors: BK | Size Chart: Shoes

**BK** BLACK



**TACT SQUAD**

**LIGHTWEIGHT TACTICAL RIPSTOP SHIRT**

**PG. 15**

- > Fabric: 65% Polyester / 35% Cotton, Lightweight Ripstop 4.25 - 4.5 oz.
- > Treated with Tactguard™ Fabric Protector to resist water, oils, and other fluids
- > Optional name tapes (2) and badge tab provided
- > Permanent collar stays
- > 7 button front with hidden YKK zipper matching shirt color
- > Two breast pockets
- > Two concealed map/document pouches beneath breast pockets
- > Two button adjustable cuff
- > Side seam mic. cord panels
- > Breathable gusseted arm pits
- > Reinforced elbows

**T8512 | Lightweight Tactical Ripstop Shirt**

Colors: DN, KH | Size charts - A2 \*No XXS, XS, 6X

**DN** DARK NAVY    **KH** KHAKI



**TACT SQUAD**

**LIGHTWEIGHT RIPSTOP TACTICAL TROUSERS**

**PG. 27**

- > Fabric: 65% Polyester / 35% Cotton, 6.5 oz per sq. yd. / 10 oz. per linear yd.; lightweight Ripstop fabric
- > Tactguard™ Fabric Protector allows resistance to water, oil, and stains
- > At-Ease™ slide adjustment waistband guarantees your trousers will always fit
- > Gusseted crotch
- > Double reinforced knee panels
- > 2 cargo pockets with ergonomically designed flaps and internal box pleats
- > Accessible cell phone / pistol mag pocket on both sides
- > Heavy-duty YKK® zippers
- > Snap waist closure with French fly
- > Double reinforced pocket corners
- > Women's style features low-rise design
- > Back welt pockets with flaps
- > Separated belt loops to allow attachment of badge
- > Machine washable

**T7512 | Lightweight Ripstop Tactical Trousers**

Colors: DN, BK, KH, OG, BR | Size charts - E2

**DN** DARK NAVY    **BK** BLACK    **KH** KHAKI  
**OD** OD GREEN    **BR** BROWN

# SHIRTS







**TACT SQUAD**

**100% POLYESTER UNIFORM SHIRT**

- > Fabric: 100% Polyester, 5-5.5 oz. per square yd. / 9.5 per linear yd.; Tropical weave
- > Stitched-in military creases
- > Pleated pockets with scalloped flaps; pen opening in left pocket
- > Hook and loop closures on both pockets
- > Cross-stitched epaulets unbutton to allow the use of shoulder loops
- > Badge eyelets with internal support
- > Extra long tail
- > Machine wash or dry clean, Industrial Laundry Friendly (up to 50 washes)

**W** WHITE
**T** TAN
**NKL** NICKEL GRAY
**GV** GRAY
**SLG** SLATE GRAY
**B** BLACK
**L** LIGHT BLUE
**FB** FRENCH BLUE
**N** NAVY

SKU	Gender	Description	Fabric	Features	Style	Colors	Size Chart
8012	Men's	100% Polyester Short Sleeve Uniform Shirt	100% Polyester	Sports Collar	Short Sleeve	W, T, NKL, GV, SLG, B, L, FB, N	B2
8002	Men's	100% Polyester Long Sleeve Uniform Shirt	100% Polyester	Banded Collar	Long Sleeve	W, T, NKL, GV, SLG, B, L, FB, N	A2





**TACT SQUAD**

**TWO-TONE 100% POLYESTER SHIRT W/ HIDDEN ZIPPER**

- > Fabric: 100% Polyester, 5-5.5 oz. per sq. yd. / 9.5 per linear yd.; Tropical weave
- > Contrasting pocket flaps and epaulets available in four color combinations
- > Hidden front zipper with faux button placket
- > Stitched-in military creases
- > Badge eyelets with internal support
- > Extra long tail
- > Pleated pockets with scalloped flaps
- > Pen opening in left pocket
- > Machine wash or dry clean (up to 50 washes)



**TWO-TONE SHIRTS & HIDDEN ZIPPERS**

Both our two-tone uniform shirts come with a hidden zipper for a simple and easy closure option to your shirt.

**LN** LIGHT BLUE /NAVY    **GB** GRAY /BLACK    **WN** WHITE /NAVY    **WB** WHITE /BLACK

SKU	Gender	Description	Fabric	Features	Style	Colors	Size Chart
8012	Men's	100% Polyester Short Sleeve Uniform Shirt	100% Polyester	Sports Collar	Short Sleeve	LN, GB, WN, WB	B2
8002	Men's	100% Polyester Long Sleeve Uniform Shirt	100% Polyester	Banded Collar	Long Sleeve	LN, GB, WN, WB	A2



**TACT SQUAD**

**POLYESTER / COTTON UNIFORM SHIRT**

- > Fabric: 65% Polyester / 35% Cotton, 4.25 oz. per sq. yd. / 7 oz. per linear yd.; Tropical weave
- > Stitched-in military creases
- > Pleated pockets with scalloped flaps; pen opening in left pocket
- > Hook and loop closures on both pockets
- > Cross-stitched epaulets unbutton to allow the use of shoulder loops
- > Badge eyelets with internal support
- > Extra long tail
- > Machine washable

W WHITE
 T TAN
 NKL NICKEL GRAY
 GY GRAY
 L LIGHT BLUE
 NJ FRENCH BLUE
 N NAVY

\*No XXS-XS

SKU	Gender	Description	Fabric	Features	Style	Colors	Size Chart
8013	Men's	Poly / Cotton Uniform Shirt	65% Polyester / 35% Cotton	Sports Collar	Short Sleeve	W, T, NKL, GY, L, NJ, N	B2
8013W	Women's	Poly / Cotton Uniform Shirt	65% Polyester / 35% Cotton	Sports Collar	Short Sleeve	W, L, N	D
8003	Men's	Poly / Cotton Uniform Shirt	65% Polyester / 35% Cotton	Banded Collar	Long Sleeve	W, T, NKL, GY, L, NJ, N	A2
8003W	Women's	Poly / Cotton Uniform Shirt	65% Polyester / 35% Cotton	Banded Collar	Long Sleeve	W, L, N	C



**TACT SQUAD**

**TWO-TONE POLY / COTTON UNIFORM SHIRT W/ HIDDEN ZIPPER**

- > Fabric: 65% Polyester / 35% Cotton, 5-5.5 oz. per sq. yd. / 9 oz per linear yd.; Tropical weave
- > Pocket flaps and epaulets available in four color combinations
- > Hidden front zipper with faux button placket
- > Stitched-in military creases
- > Badge eyelets with internal support
- > Extra long tail
- > Pleated pockets with scalloped flaps; pen opening in left pocket
- > Machine washable

LN LIGHT BLUE / NAVY    GB GRAY / BLACK    WN WHITE / NAVY

\*No XXS-XS

SKU	Gender	Description	Fabric	Features	Style	Colors	Size Chart
8013	Men's	Poly / Cotton Uniform Shirt	65% Polyester / 35% Cotton	Sports Collar	Short Sleeve	LB, GB, WN	B2
8003	Men's	Poly / Cotton Uniform Shirt	65% Polyester / 35% Cotton	Banded Collar	Long Sleeve	LB, GB, WN	A2



**TACT SQUAD**

**POLY/COTTON NYPD UNIFORM SHIRT**

- › Fabric: 65% Polyester / 35% Cotton; 9.5-10 oz, Tropical Weave
- › Class A dress shirt
- › Permanent collar stays
- › 1.75 in. spaced badge tab
- › Collar has 2 eyelet holes to accommodate brass
- › 7 button front
- › Pleated pockets, scalloped flaps, hook and loop closures
- › Pen opening in left breast pocket
- › Available with badge holder and metal eyelets in pouch
- › Cross-stitched shoulder epaulets
- › Available in men and women
- › Machine washable

**F830 | Men's NYPD Uniform Long Sleeve Shirt**

Colors: N, MB | Size charts - A2 \*No XXS-XS

**F830W | Women's NYPD Uniform Long Sleeve Shirt**

Colors: NW, MBW | Size charts - C

**N** NAVY    **MB** MEDIUM BLUE



**TACT SQUAD**

**POLY/COTTON NYPD UNIFORM SHIRT**

- › 65% Polyester / 35% Cotton; 9.5-10 oz Tropical Weave
- › Class A dress shirt
- › Permanent collar stays
- › 1.75 in. spaced badge tab
- › Collar has 2 eyelet holes to accommodate brass
- › 7 button front
- › Pleated pockets, scalloped flaps, hook and loop closures
- › Pen opening in left breast pocket
- › Available with badge holder and metal eyelets in pouch
- › Cross-stitched shoulder epaulets
- › Available in men and women
- › Machine washable

**F831 | Men's NYPD Uniform Short Sleeve Shirt**

Colors: N, MB | Size charts - B2 \*No XXS-XS

**F831W | Women's NYPD Uniform Short Sleeve Shirt**

Colors: NW, MBW | Size charts - D \*No size 48 available

**N** NAVY    **MB** MEDIUM BLUE



**TACT SQUAD**

**DELUXE TRANSIT SHIRT**

- › Fabric: 65% Polyester / 35% Cotton, heavy-duty 4.75 - 5 oz. per sq. yd. / 8 oz per linear yd.; Tropical weave
- › (Short Sleeve) Square tail allows shirt to be worn untucked, but maintain uniform appearance
- › Wrinkle resistant finish
- › Convertible collar provides a professional look
- › 2 open-top flapped pockets
- › Machine washable

**8301 | Men's Delux Transit Short Sleeve Shirt**

Colors: LB | Size charts - B2 \*No XXS, XS, 6XL

**8301LW | Women's Delux Transit Short Sleeve Shirt**

Colors: LB | Size charts - D \*No XXS, XS, 6XL

**8300 | Men's Delux Transit Long Sleeve Shirt**

Colors: LB | Size charts - A2 \*No XXS, XS, 6XL

**8300LW | Women's Delux Transit Long Sleeve Shirt**

Colors: LB | Size charts - C

**LB** LIGHT BLUE

**TACT SQUAD**

**OXFORD DRESS SHIRT**

- › Fabric: 60% Cotton / 40% Polyester
- › Great for corporate security, hospitality or general office wear
- › Banded button down collar
- › Left chest pocket
- › Wrinkle and stain resistant
- › Machine washable

**8015 | Oxford Dress Short Sleeve Shirt**

Colors: W, LB | Size charts - B2 \*No XXS, XS, 6XL

**8005 | Oxford Dress Long Sleeve Shirt**

Colors: W, LB | Size charts - J

**W** WHITE    **LB** LIGHT BLUE



**TACT SQUAD**

**POLY/WOOL DUTY SHIRT**

- › 75% Polyester / 25% Worsted Wool; 11.5-12 oz Tropical Weave
- › Lined banded collar with internal stays
- › Collar has 2 eyelet holes to accommodate brass (1.75 in spacing)
- › Pleated pockets, scalloped flaps, hook and loop closures
- › Pen opening in left pocket
- › Eyelet badge holder with support strap
- › Cross-stitched shoulder straps
- › Supercrease® to maintain crispness
- › Extra long shirt tails

**F803 | Men's Long Sleeve Poly/Wool Duty Shirt**

Colors: N | Size charts - A2 \*No XXS, XS, 6X

**FW803 | Women's Long Sleeve Poly/Wool Duty Shirt**

Colors: N | Size charts - C \*No XXS, XS, 6X

**F813 | Men's Short Sleeve Poly/Wool Duty Shirt**

Colors: N | Size charts - B2 \*No XXS, XS, 6X

**FW813 | Women's Short Sleeve Poly/Wool Duty Shirt**

Colors: N | Size charts - D2 \*No XXS, XS, 6X

**N** NAVY



**TACT SQUAD**

**STREET LEGAL SHIRT**

- › Fabric: 65% Polyester / 35% Cotton, 7.5 oz per sq. yd. / 12.5 oz. per linear yd.; Twill Weave
- › Treated with Tactguard™ to resist water, oils, and other stains
- › Stitched-in creases in front and back for crispness
- › Pleated pockets with scalloped flaps and pen opening on left pocket
- › Hook and loop closures on both pockets
- › Convertible sports collar with permanent collar stays (short sleeve only)
- › Two button adjustable cuffs
- › Machine washable

**T8004 | Long Sleeve Street Legal Shirt**

Colors: DN, BK | Size charts - A2 \*No XXS, XS, 6X

**T8014 | Short Sleeve Street Legal Shirt**

Colors: DN, BK | Size charts - B2 \*No XXS, XS, 6X

**DN** DARK NAVY    **BK** BLACK

See Pg. 26 for matching pants.



See Pg. 26  
for matching pants.

**TACT SQUAD**

**RIPSTOP BDU SHIRT**

- > Fabric: 65% Polyester / 35% Cotton, 6.5 oz per sq. yd. / 11 oz. per linear yd.; Ripstop fabric
- > Sewn to military specifications
- > Rectangular flaps and hidden button closure
- > Two pocket design available in navy and black colors only
- > Four pocket design available in woodland camo only
- > Adjustable cuff tabs
- > Pen opening in top left pocket
- > Double-stitched for durability
- > Concealed button front
- > Reinforced elbow patches and roll-up sleeve feature
- > Machine washable

**T8010 | Men's Two Pocket Ripstop BDU Shirt | Long Sleeve**

Colors: N, BK | Size charts - G \*No XXS, XS

**T8010WD | Men's Four Pocket Ripstop BDU Shirt | Long Sleeve**

Colors: WD | Size charts - G \*No XXS, XS, 6X

**N** NAVY   **BK** BLACK   **WD** WOODLAND

800.858.6755



See Pg. 27  
for matching pants.

**TACT SQUAD**

**LIGHTWEIGHT TACTICAL RIPSTOP SHIRT**

- > Fabric: 65% Polyester / 35% Cotton, Lightweight Ripstop 4.25 - 4.5 oz.
- > Treated with Tactguard™ Fabric Protector to resist water, oils, and other fluids
- > Optional name tapes (2) and badge tab provided
- > Permanent Collar Stays
- > 7 button front with hidden YKK zipper matching shirt color
- > Two breast pockets
- > Two concealed map/document pouches beneath breast pockets
- > Two button adjustable cuff
- > Side seam mic. cord panels
- > Breathable gusseted arm pits
- > Reinforced elbows

**T8512 | Lightweight Tactical Ripstop Shirt**

Colors: DN, KH | Size charts - A2 \*No XXS, XS, 6X

**DN** DARK NAVY   **KH** KHAKI



## TACT SQUAD

### TACT PRO 2.0 POLO SHIRT

- > Fabric: 94% Polyester / 6% Spandex
- > Fabric is stain, fade and wrinkle resistant
- > Collar stays for a cleaner, more professional appearance
- > Special wicking fabric dries faster than cotton and standard polyester
- > Mic holder on both shoulders and at the bottom of placket
- > Shrink, wrinkle and fade resistant
- > 3 button placket
- > Gusseted mesh underarm panels
- > Pen pockets on left sleeve
- > Machine washable



Mic holder at the bottom of placket



Pen pocket on left sleeve



Mesh armpit for breathability

#### T8505 | Men's Tact Pro 2.0 Polo Shirt

Colors: WH, BK, DN, DG, ST | Size Charts - N **\*Available in XS; No 6X**

<b>WH</b>	WHITE	<b>BK</b>	BLACK	<b>DN</b>	DARK NAVY
<b>DG</b>	DARK GREEN	<b>ST</b>	SILVER TAN		





**TACT SQUAD**  
**SECURITY POLO SHIRT**

- > Fabric: 60% Polyester / 40% Cotton interlock knit
- > Includes SECURITY lettering on front left chest and back
- > Available in 5 color combinations
- > 3 button placket
- > Knit collar and banded sleeves
- > Machine washable

**8502 | Men's Security Polo Shirt**  
Colors: W, GY, GD, N, BK | Size Charts - N

<b>W</b> WHITE /BLACK LETTERS	<b>GY</b> GRAY /BLACK LETTERS
<b>GD</b> GOLD /BLACK LETTERS	<b>N</b> NAVY /GOLD LETTERS
<b>BK</b> BLACK /WHITE LETTERS	

**TACT SQUAD**  
**STANDARD POLO SHIRT**

- > Fabric: 60% Polyester / 40% Cotton interlock knit
- > 3 button placket
- > Knit collar and banded sleeves
- > Machine washable

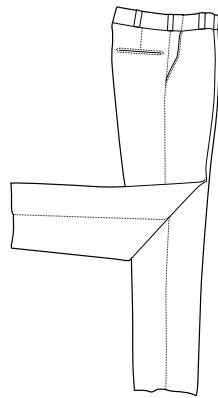
**8503 | Men's Standard Polo Shirt**  
Colors: W, GY, GD, N, BK | Size Charts - N

<b>W</b> WHITE	<b>GY</b> GRAY	<b>GD</b> GOLD
<b>N</b> NAVY	<b>BK</b> BLACK	

# TROUSERS







**TACT SQUAD**

**POLYESTER UNIFORM TROUSERS**

- > Fabric: 100% Polyester, 7-7.5 oz. per sq. yd. / 12 oz. per linear yd.; Twill weave
- > At-Ease™ slide adjustment waistband
- > Lined 7/8" inserted belt loops
- > Quarter-top front pocket
- > Heavy-duty YKK® zipper
- > 2 back pockets with button tab on left pocket
- > Bar tacks at stress points for durability
- > Industrial Laundry Friendly (up to 50 washes)
- > Machine washable

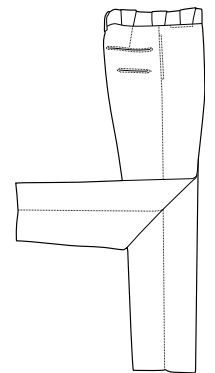
**7002 | Men's Polyester Uniform Trousers** \*Size 26 Available

Colors: NE, BE, HE, BRE, SGE, GYE, STE | Size charts - E

**7002W | Women's Polyester Uniform Trousers**

Colors: NE, BE, HE, BRE | Size charts - F

- NE** NAVY   **BE** BLACK   **HE** HEATHER GRAY
- BRE** BROWN   **SGE** SPRUCE GREEN   **GYE** GRAY
- STE** SILVER TAN



**TACT SQUAD**

**ELASTIQUE UNIFORM TROUSERS**

- > Fabric: 100% Polyester; Elastique weave
- > At-Ease™ slide adjustment waistband
- > 2" waistband with keystone belt loops
- > 2 billy/sap pockets
- > Extra deep back pockets with button tab
- > Heavy-duty YKK® zipper with French fly for additional support
- > Straight side pockets with watch pocket
- > Snug-tex waistband
- > Bar tacks at key stress points
- > Machine washable

**7003 | Men's Elastique Uniform Trousers**

Colors: N, G | Size charts - E

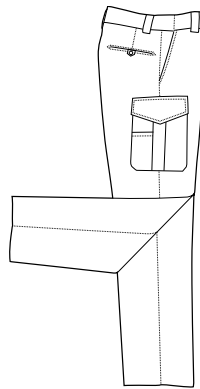
- N** NAVY   **G** GREEN



3M™ reflective tape with cargo flap tuck in



Hidden zipper cargo pocket



## TACT SQUAD

### POLYESTER UNIFORM TROUSERS W/ CARGO POCKETS

- › Fabric: 100% Polyester, 7-7.25 oz. per sq. yd. / 12 oz per linear yd.; Twill weave
- › At-Ease™ slide adjustment waistband
- › Lined 7/8" inserted belt loops
- › Zippered cargo pockets with small outside pocket with hook and loop closure
- › Quarter-top front pockets
- › Heavy-duty YKK® zipper
- › 2 back pockets with button tab on left
- › 3M™ reflective tape when cargo flap is tucked in
- › Machine washable

#### T7007 Men's 100% Polyester Uniform Trousers with Cargo Pockets

Colors: DN, BK | size charts - E \*No 62-66

**DN** DARK NAVY **BK** BLACK



## TACT SQUAD

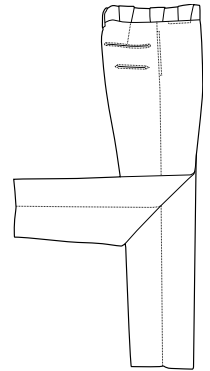
### NEW YORK STYLE UNIFORM TROUSERS

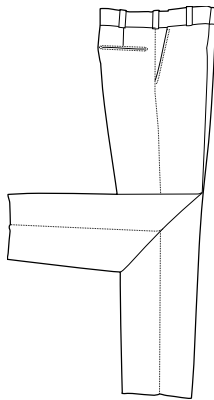
- › Fabric: 100% Polyester, 7-7.25 oz. per sq. yd. / 11.75 - 12 oz per linear yd.; Twill weave
- › At-Ease™ slide adjustment waistband
- › 6 pocket design
- › Straight style pockets
- › Heavy-duty YKK® zipper
- › Waistband designed for neatness
- › 1/2" black stripe down both legs
- › Bar tacks at all points to stress
- › Machine washable

#### 7002NYE | Men's New York Style Elastique Uniform Trousers

Colors: DN | Size charts - E \*No 60-66

**DN** DARK NAVY





**TACT SQUAD**

**POLY/COTTON UNIFORM TROUSERS**

- › Fabric: 65% Polyester / 35% Cotton, 7.5 oz. per sq. yd. / 12.5 oz per linear yd.; Twill weave
- › At-Ease™ slide adjustment waistband
- › Coated with Tactguard™ Fabric protection
- › 7/8" inserted belt loops
- › Two quarter front pockets and two back pockets
- › Bar tacks at stress points for durability
- › French fly with auto-lock brass zipper
- › Split seam tailored construction
- › Comfort fit pattern to accommodate athletic builds
- › Machine washable

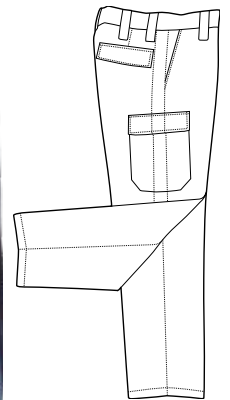
**7012 | Men's Polyester Uniform Trousers**

Colors: N, B | Size charts - E \*No 64-66

**7012W | Women's Polyester Uniform Trousers**

Colors: N, B | Size charts - F \*No 2, 26-30

**N** NAVY **B** BLACK



**TACT SQUAD**

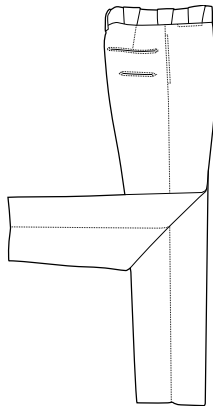
**NEW JERSEY TROUSERS W/ CARGO POCKETS**

- › Fabric: 65% Poloyester / 35% Cotton, 7.25 oz. per sq. yd. / 12 oz per linear yd.; Twill weave
- › At-Ease™ slide adjustment waistband
- › Tactguard™ fabric protector for stain resistance
- › Pre-stripped with French blue braid; meets New Jersey Department of Corrections specifications
- › 7 pocket design
- › 2 quarter-top front pockets
- › Utility cargo pockets with Velcro closure
- › Snug-tex waistband
- › Heavy-duty YKK® zipper
- › Machine washable

**T7012NJ | Men's New Jersey Trousers w/ Cargo Pockets**

Colors: DN | Size charts - E \*No 62-66

**DN** DARK NAVY



**TACT SQUAD**

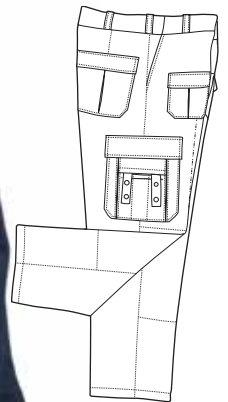
**POLY/WOOL ADMIN TROUSERS**

- > Fabric: 75% Polyester / 25% Worsted Wool; 11.5-12 oz Serge Weave
- > At-Ease™ slide adjustment waistband
- > Double hook and eye closures
- > Lined 7/8" inserted belt loops
- > On seam front pockets
- > 2 quarter front pocket and two back pockets
- > SAP / watch pocket
- > French fly for additional support
- > Supercrease® front and rear for crispness
- > Heavy-duty brass zipper
- > Triangle bar tacks on back pockets
- > Machine washable

**F703 | Men's Poly/Wool Duty Trousers**

Colors: DN | Size charts - E \*No 48-66

**DN** DARK NAVY



**TACT SQUAD**

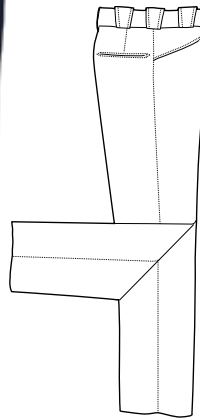
**POLY/COTTON NYPD DUTY TROUSERS**

- > Fabric: 65% Polyester / 35% Cotton; 7.8 oz Heavy-Duty Twill Weave
- > At-Ease™ slide adjustment waistband
- > Bar tacks at stress point for durability
- > French fly for added support
- > Memory lock on the brass zipper
- > 2 top opening back pockets with cargo flap
- > 2 front quarter top pockets
- > Stitched-in crease to maintain crispness
- > Extra pockets to accommodate accessories

**F721DNE | Poly/Cotton NYPD Tactical Trousers**

Colors: DN | Size charts - E \*No 58-66

**DNE** DARK NAVY



**TACT SQUAD**

**POLYESTER ELASTIQUE TRANSIT TROUSERS**

- > Fabric: 100% Polyester; Elastique Weave
- > 4 pocket trouser with western style pockets
- > Heavy-duty YKK zipper
- > Snug-tex waistband helps to keep uniform shirt tucked in
- > 2 quarter top front pockets
- > Triangular bar tacking at stress points
- > French fly
- > Machine washable

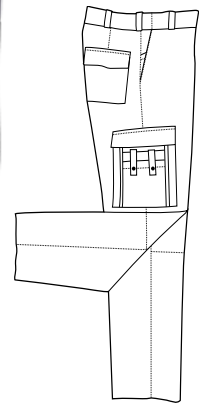
**7033 | Men's Polyester Elastique Transit Trousers**

Colors: N, B | Size charts - E \*No 64-66, Short Rise Available 30-44

**7033W | Women's Polyester Elastique Transit Trousers**

Colors: N, B | Size charts - F \*No 2, 26-30

**N** NAVY **B** BLACK



**TACT SQUAD**

**EMS/EMT UTILITY TROUSERS**

- > Fabric: 65% Polyester / 35% Cotton, 7.5 oz. per sq. yd. / 12.5 oz per linear yd.; Twill weave
- > At-Ease™ slide adjustment waistband
- > Heavy-duty YKK® zipper
- > Double hook and eye closure
- > Reinforced knees and seat for durability
- > Bar tacks at all points of stress
- > 6 pocket design
- > Machine washable

**7011 | Men's EMS/EMT Utility Trousers**

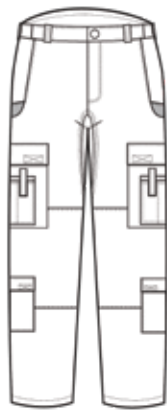
Colors: N, B | Size charts - E \*No 62-66

**7011W | Women's EMS/EMT Utility Trousers**

Colors: N, B | Size charts - F \*No 2, 26-30

**N** NAVY **B** BLACK





## TACT SQUAD

### LIGHTWEIGHT RIPSTOP EMS TROUSERS

- › Fabric: 65% Polyester / 35% Cotton, 6 oz per sq. yd. / 10 oz per linear yd.; lightweight Ripstop fabric
- › Tactguard™ fabric protector to resist water, oils, and other fluids
- › Triple-stitch side and seat seams adds strengthened durability
- › Double reinforced U-shaped pocket corner
- › Heavy-duty button waist closure
- › Longer rise in back allows easier bending or squatting
- › Heavy-duty dot snap and Velcro closure pocket straps
- › Gusseted crotch gives increased durability and ease of movement
- › Double reinforced knee panels with inside knee pad pocket
- › At-Ease™ slide adjustment waistband
- › Women's style features new low-rise design for better comfort
- › Heavy-duty YKK® zippers
- › Lower leg utility pockets on both right and left legs
- › Machine washable

#### 7021 | Men's Lightweight Ripstop EMS Trousers

Colors: DN, BK | Size charts - E \*No 56-66

#### 7021W | Women's Lightweight Ripstop EMS Trousers

Colors: DN, BK | Size charts - F \*No 20-30

DN

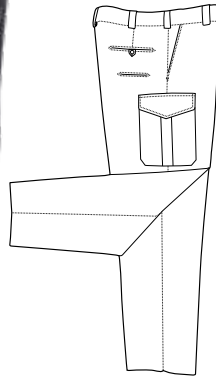
DARK  
NAVY

BK

BLACK

800.858.6755





See Pg. 14  
for matching shirt.

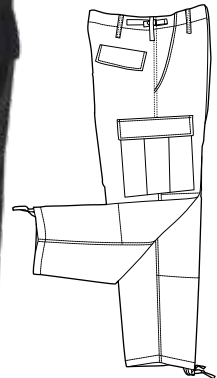
**TACT SQUAD**  
**STREET LEGAL TROUSERS**

- > Fabric: 65% Polyester / 35% Cotton, 7.5 oz per sq. yd. / 12.5 oz. per linear yd.; Twill weave
- > Treated with Tactguard™ fabric protector to resist water, oils, and other fluids
- > At-Ease™ slide adjustment waistband
- > Supercrease® treated in front and back for a crisp, clean look
- > 8 durable pocket design
- > 2 bellows-style cargo pockets
- > 2 extra deep pockets
- > 2 back pockets with button tabs
- > Back billy pockets
- > Snug-Tex waistband provides durability and helps shirts remain tucked
- > Heavy-duty YKK® zipper
- > Drop belt loops
- > Machine wash or dry clean

**T7004 | Men's Street Legal Trousers**  
Colors: DN, BK | Size charts - E \*No 62-66

**TW7004 | Women's Street Legal Trousers**  
Colors: DN, BK | Size charts - F

**DN** DARK NAVY **BK** BLACK



See Pg. 15  
for matching shirt.



**TACT SQUAD**  
**RIPSTOP BDU TROUSERS**

- > Fabric: 65% Polyester / 35% Cotton, 6.5 oz per sq. yd. / 11 oz. per linear yd.; Ripstop fabric
- > Sewn to military specifications
- > 2 front slash pockets
- > 2 rear pockets with snag proof rectangular pocket flaps with hidden closures
- > 2 reinforced adjustable side tabs
- > Reinforced knees and seat for durability
- > Drawstring legs to tighten or shorten your trousers
- > Machine wash or dry clean

**T7010 | Men's BDU Ripstop Trousers**  
Colors: N, BK, WD, BR | Size charts - H \*Available in XS

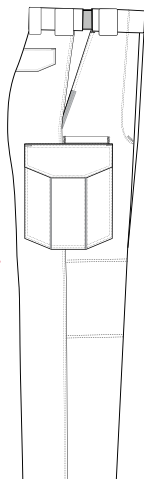
**N** NAVY **B** BLACK **WD** WOODLAND **BR** BROWN



## TACT SQUAD

### LIGHTWEIGHT RIPSTOP TACTICAL TROUSERS

- › Fabric: 65% Polyester / 35% Cotton, 6.5 oz per sq. yd. / 10 oz. per linear yd.; lightweight Ripstop fabric
- › Tactguard™ Fabric Protector allows resistance to water, oil, and stains
- › At-Ease™ slide adjustment waistband guarantees your trousers will always fit
- › Gusseted crotch
- › Double reinforced knee panels
- › 2 cargo pockets with ergonomically designed flaps and internal box pleats
- › Accessible cell phone / pistol mag pocket on both sides
- › Heavy-duty YKK® zippers
- › Snap waist closure with French fly
- › Double reinforced pocket corners
- › Women's style features low-rise design
- › Back welt pockets with flaps
- › Separated belt loops to allow attachment of badge
- › Machine washable



#### T7512 | Men's Lightweight Ripstop Tactical Trousers

Colors: DN, BK, KH, OD, BR | Size charts - E2 \*Available 26-54

#### TW7512 | Women's Lightweight Ripstop Tactical Trousers

Colors: DN, BK, KH, OD, BR | Size charts - E2

**DN** DARK NAVY   **BK** BLACK   **KH** KHAKI

**OD** OD GREEN   **BR** BROWN



See Pg. 15  
for matching shirt.

# OUTERWEAR





MAX

TAR

CAP

CU.



**TACT SQUAD**

**UNIFORM BLAZER**

- › Fabric: 100% wrinkle-resistant textured woven Polyester
- › Traditional 2 button single breasted
- › Fully-lined with 2 inside pockets
- › Center vent for comfort
- › 3 button cuff
- › Dry clean only
- › Burgundy and heather gray available in men's only

**8000 | Men's Uniform Blazer**

Colors: N, B, H, BG | Size Charts - K

**8000W | Women's Uniform Blazer**

Colors: N, B | Size Charts - L \*No Size 24

**N** NAVY **B** BLACK **H** HEATHER GRAY **BG** BURGUNDY





**TACT SQUAD**

**JOB SHIRT 2.0**



- > Fabric: 80% Cotton / 20% Polyester
- > Fleece inner lining
- > Lower placket mic tab
- > Dual shoulder mic tabs
- > Concealable D-ring
- > Dual hidden chest pockets
- > Patch friendly pen pockets
- > Large elbow canvas patches
- > Dual lower hand pockets
- > Matching collar
- > Machine washable

**2005 | Men's Job Shirt 2.0**

Colors: N | Size Charts - N \*No XXS, 6X

**N** NAVY



**TACT SQUAD**

**COMMANDO V-NECK**

- › Fabric: 100% Acrylic Yarn
- › Original Tact Squad V-neck commando sweater design
- › Velcro closure epaulets
- › Reinforced elbow patches for increased durability
- › Sewn on badge tab
- › Breathable design allows you to stay warm without overheating
- › Machine washable

**2003 | Men's 100% Acrylic Yarn Commando V-Neck Sweater**

Colors: N, B | Size Charts - N \*No 6X

**N** NAVY **B** BLACK

**TACT SQUAD**

**COMMANDO V-NECK**

- › Fabric: 100% Wool
- › Original Tact Squad V-neck commando sweater design
- › Epaulets with metal button closures
- › Reinforced elbow patch for increased durability
- › Optional separate badge tab included
- › Dry clean only

**2004 | Men's 100% Wool Commando V-Neck Sweater**

Colors: N, B, G | Size Charts - N \*No 5X, 6X

**N** NAVY **B** BLACK **G** GREEN





## TACT SQUAD

### FLANNEL-LINED WINDBREAKER

- › Fabric: 100% Nylon shell with fleece inner lining, water resistant
- › Reinforced hand-warmer pockets
- › Color matching snap closures
- › Drawstring waist and shirred elastic cuff
- › Select Made-To-Order options available
- › Machine washable
- › Custom solid or reflective printing available

#### 1111 | Men's Flannel Lined Windbreaker

Colors: N, B, BR, Y, G | Size Charts - N

**N** NAVY **B** BLACK **BR** BROWN **Y** YELLOW **G** GREEN



## TACT SQUAD

### CLASSIC SECURITY WINDBREAKER

- › Fabric: 100% Nylon shell with fleece inner lining, water resistant
- › Reinforced hand-warmer pockets
- › Color matching snap closures
- › Drawstring waist and shirred elastic cuff
- › Machine washable
- › SECURITY lettering on left chest and across back
- › Machine wash and dry clean



#### 1112 | Men's Classic Security Windbreaker

Colors: B, N, Y | Size Charts - N

**B** BLACK /WHITE LETTERS **Y** YELLOW /BLACK LETTERS **N** NAVY /WHITE LETTERS



## TACT SQUAD

### NYLON SHELL RAID JACKET

- › Fabric: 100% Nylon outershell with flannel inner lining
- › Reflective stripe on chest, back, sleeve, and cuff
- › Metal button closure
- › Drawstring waist and semi-elastic cuffs
- › Slash hand warmer pockets
- › Select Made-To-Order options available
- › Machine washable
- › Custom printing available
- › Optional NYPD style raid jacket has NYPD badge and POLICE across front and NYPD POLICE across back



#### F1088 | Men's Nylon Shell Raid Jacket

Colors: DN | Size Charts - N \*No 6X

#### F1088NY | Men's NYPD Nylon Shell Raid Jacket

Colors: DN | Size Charts - N \*No 6X

**DN** DARK NAVY



**TACT SQUAD**  
**DUTY JACKET**



- > Fabric: 100% Polyester with water resistant coating
- > Removable polyester liner
- > Zippered side vents with snap closures
- > Removable hood and collar
- > Storm front flap
- > Badge tab
- > Machine washable

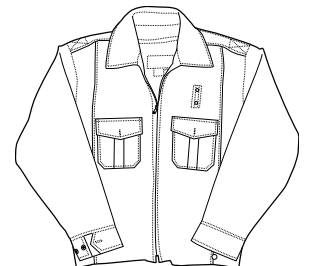


**1009 | Men's Duty Jacket** \*Available in S-8X  
Colors: N, B | Size Charts - N

**N** NAVY **B** BLACK

**TACT SQUAD**  
**CLASSIC DUTY JACKET**

- > Fabric: 100% Nylon shell
- > Removable quilted liner
- > Badge tab with metal eyelets
- > 2 pleated flap/patch front pockets with metal buttons
- > 10" zippered side vents
- > Heavy-duty YKK® zipper
- > Machine washable



**9001 | Men's Nylon Classic Duty Jacket**  
Colors: N, B, BR | Size Charts - N \*Available in XS

**N** NAVY **B** BLACK **BR** BROWN



**TACT SQUAD**

**POLICE BOMBER JACKET**

- > Fabric: 100% Nylon, water resistant
- > Quilted polyfill insulation
- > Full cut sleeves for better mobility
- > Elastic cuffs and waist
- > Pleated patch pockets with hand-warmer storage
- > Badge tab
- > Plush pile collar
- > Machine washable

**1000 | Men's Police Bomber Jacket**

Colors: N, B | Size Charts - N

**N** NAVY **B** BLACK



**TACT SQUAD**

**BOMBER JACKET**

- > Fabric: 100% Nylon, water resistant
- > Quilted polyfill insulation
- > 2 slash welt pockets
- > Plush pile collar
- > Badge tab with metal eyelets
- > Machine washable

**1001 | Men's Bomber Jacket**

Colors: N, B | Size Charts - N\* Available in XS

**N** NAVY **B** BLACK





**TACT SQUAD**

**PATROL BOMBER JACKET**

- > Fabric: 100% Nylon outer shell
- > Waterproof outer shell is breathable for added comfort
- > Badge tab with metal eyelets
- > ThermoGuard™ insulation to keep in warmth
- > Waist-length jacket
- > Zip-out removable liner
- > Knit cuffs and waistband
- > Side zippers for easy equipment access
- > Heavy-duty YKK® zipper
- > Machine washable



**F1033 | Men's Patrol Bomber Jacket**

Colors: DN | Size Charts - M **\*No 5X, 6X**

**DN** DARK NAVY

**TACT SQUAD**

**TACT GEN JACKET**

- > Fabric: 100% Nylon with water resistant coating
- > Treated with Aquatact™ for increased water resistance
- > 3 inside pockets
- > ThermoGuard™ insulated liner
- > Optional removable fur collar
- > Badge tab
- > Machine washable



**F1003 | Men's Tact Gen Jacket**

Colors: DN, BK, GN | Size Charts - M **\*Available in XS**

**DN** DARK NAVY **BK** BLACK **GN** GREEN



**TACT SQUAD**

**SECURITY PARKA W REMOVABLE HOOD**

- > Fabric: 100% Nylon shell
- > Zippered side vents
- > Inside storm flap
- > Heavy-duty YKK® zipper
- > Plush pile collar
- > Zip-off quilted hood with drawstring
- > Polyfill quilted liner
- > Machine washable



**1011 | Men's Security Parka w/ Removable Hood**

Colors: N, B, BR | Size Charts - N

**N** NAVY   **B** BLACK   **BR** BROWN

**TACT SQUAD**

**THREE SEASON JACKET**

- > Fabric: 100% Nylon, water resistant
- > Treated with Aquatact™ fabric protection to prevent water penetration
- > Collar and torso lined with micro-fleece
- > Quilted raglan sleeves
- > Heavy-duty YKK® zipper extends to collar
- > 2 zippered slash pockets
- > Knit cuff and waistband
- > Machine wash and dry clean



**1004 | Men's Three Seasons Jacket**

Colors: N, B | Size Charts - N

**N** NAVY /GRAY LINER   **B** BLACK /BLACK LINER



**TACT SQUAD**

**PERFECT STORM DUTY JACKET**

- › Fabric: 100% Nylon, water and windproof
- › Treated with Climatact™ for complete wind and water resistance
- › 2-way bellows fleece lined, hand-warming pockets
- › Inside storage pockets
- › Heavy-duty YKK® zipper
- › 3 fully concealable customizable identification panels: 2 in front and 1 in back  
Optional Hi-Vis preprinted panels: SHERIFF, POLICE, SECURITY, and EMS available in sets of three
- › Storable hood for rainy or cold weather
- › Machine washable

**F1006 | Men's Perfect Storm Duty Jacket**

Colors: DN, BK, GN | Size Charts - M *\*Available in XS*

**DN** DARK NAVY   **BK** BLACK   **GN** GREEN



**Hi-Vis Optional Panels**

Hi-Vis Panels are offered in sets of three, two front and one back panel. If you desire to order panels for your coat, please use the following item codes:

PANEL POLICE    PANEL SECURITY  
PANEL SHERIFF    PANEL EMS



**TACT SQUAD**

**POLYESTER AIR-MESH SAFETY VEST**

- > Fabric: 100% Polyester air-mesh
- > Optional SECURITY lettering on front and rear stripe
- > Velcro front closure
- > 1/2 in. reflective chest striping

**DC65YW PLAIN | Polyester Air-Mesh Safety Vest**  
 Colors: HI-Viz Yellow | Size Charts - ONE SIZE FITS ALL

**DC65OR PLAIN | Polyester Air-Mesh Safety Vest**  
 Colors: HI-Viz Orange | Size Charts - ONE SIZE FITS ALL

**DC65YW SEC | Polyester Air-Mesh Safety Vest W/ Security Print**  
 Colors: HI-Viz Yellow | Size Charts - ONE SIZE FITS ALL

**DC65OR SEC | Polyester Air-Mesh Safety Vest W/ Security Print**  
 Colors: HI-Viz Orange | Size Charts - ONE SIZE FITS ALL

**Y** HI-VIZ YELLOW **O** HI-VIZ ORANGE

**TACT SQUAD**

**MULTIPOINT BREAKAWAY SAFETY VEST**

- > Fabric: 100% Polyester solid knit
- > ANSI 107-2010 Class 2 Level 2, 3rd party certified
- > 2" reflective material
- > 1 lower outside pocket
- > 2 inside pockets
- > Available with or without SECURITY lettering on the front and back
- > Dual mic tabs on each shoulder

**DC66 PLAIN | Multipoint Breakaway Safety Vest**  
 Colors: HI-Viz Yellow | Size Charts - N **\*No Small**

**DC66 SEC | Multipoint Breakaway Safety Vest With Security Printing**  
 Colors: HI-Viz Yellow | Size Charts - N **\*No Small**

**Y** HI-VIZ YELLOW



**TACT SQUAD**  
**POLYURETHANE RAINCOAT**

- > Fabric: polyurethane coated Nylon
- > Detachable drawstring hood
- > Storm flaps provide additional weather protection
- > Patch pockets with slash openings
- > Underarm vents and vented back for comfort
- > Take up snaps on sleeves all for secure fit
- > Badge tab
- > 48" length

**6011 | Men's Polyurethane Coated Nylon**

Colors: B, G | Size Charts - N \*No 6X

**B** BLACK **G** CDCR GREEN



**TACT SQUAD**  
**PVC RAINCOAT**

- > Fabric: PVC coated Polyester
- > Storm flaps provide additional weather protection
- > 2 exterior pockets
- > Underarm vents and vented back for comfort
- > Take up snap on sleeves allow for secure fit
- > Available with SECURITY lettering on back and left chest
- > 51 in. - 52 in. length

**6011Y | Men's PVC Coated Polyester Raincoat**

Colors: Y | Size Charts - N \*No 6X

**6011YS | Men's PVC Coated Polyester Raincoat W Security Print**

Colors: YS | Size Charts - N \*No 6X

**6012B | Men's PVC Coated Polyester Raincoat**

Colors: B | Size Charts - N \*No 6X

**6012 BS | Men's PVC Coated Polyester Raincoat W Security Print**

Colors: BS | Size Charts - N \*No 6X

**Y** YELLOW **YS** YELLOW /BLACK SECURITY  
**B** BLACK **BS** BLACK /WHITE SECURITY





## TACT SQUAD

### REVERSIBLE WATERPROOF RAINCOAT

- › Fabric: 100% waterproof 2-ply Nylon
- › 52" raincoat designed for law enforcement
- › 2" wide 3M™ reflective tape around shoulders, chest and biceps on Hi-Viz side
- › Zippered front with Velcro closures over-fly
- › Raglan sleeves
- › Badge tab
- › Machine washable

#### 6011BY | Men's Reversible Water Proof Raincoat

Colors: BY | Size Charts - N \*No 6X

#### 6011BO | Men's Reversible Water Proof Raincoat

Colors: BO | Size Charts - N \*No 6X

**BY** HI-VIZ YELLOW /BLACK INSIDE    **BO** HI-VIZ ORANGE /BLACK INSIDE

# FOOTWEAR







**TACT SQUAD**

**HI-GLOSS UNIFORM OXFORD SHOES**

- > Hi-Gloss design means you'll never have to polish your shoes
- > Protective lining helps fight against mildew and odor while keeping you nicely ventilated
- > Dense outsole helps provide extra comfort and shock absorption
- > Comfortable insole helps you stay on your feet longer
- > Non-metallic design

**S200 | Hi-Gloss Uniform Oxford**  
 Colors: Black | Size Chart: Shoes

**B** BLACK



**TACT SQUAD**

**STANDARD UNIFORM OXFORD SHOES**

- > Non-gloss and smooth outer design for a professional appearance
- > Protective lining helps fight against mildew and odor while keeping you nicely ventilated
- > Dense outsole helps provide extra comfort and shock absorption
- > Comfortable insole helps you stay on your feet longer
- > Water resistant

**S210 | Standard Uniform Oxford Shoes**  
 Colors: Black | Size Chart: Shoes

**B** BLACK



**TACT SQUAD**

**LEATHER UNIFORM OXFORD SHOES**

- > Non-gloss and smooth leather design for a professional appearance
- > Protective lining helps fight against mildew and odor while keeping you nicely ventilated
- > Dense outsole helps provide extra comfort and shock absorption
- > Comfortable insole helps you stay on your feet longer
- > Made with real leather

**S220 | Leather Uniform Oxford Shoes**  
 Colors: Black | Size Chart: Shoes

**B** BLACK

# SENTRY BOOTS

LONG-LASTING  
DURABILITY.



## TACT SQUAD

### 8" SENTRY SIDE-ZIP BOOTS

- › Leather / Nylon upper
- › Heavy-duty YKK® side zipper with hook and loop closures
- › Tact-Step™ cushioned removable insole
- › Slip and skid resistant outsole
- › Padded collar for added comfort

#### S310 | 8" SENTRY Side-Zip Boots

Colors: Black | Size Chart: Shoes

**B** BLACK



## TACT SQUAD

### 6" SENTRY SIDE-ZIP BOOTS

- › Polishable Leather / Nylon upper
- › Heavy-duty YKK® side zipper with hook and loop closures
- › Tact-Step™ cushioned removable insole
- › Slip, skid and mark resistant outsole
- › Padded collar for added comfort

#### S300 | 6" SENTRY Side-Zip Boots

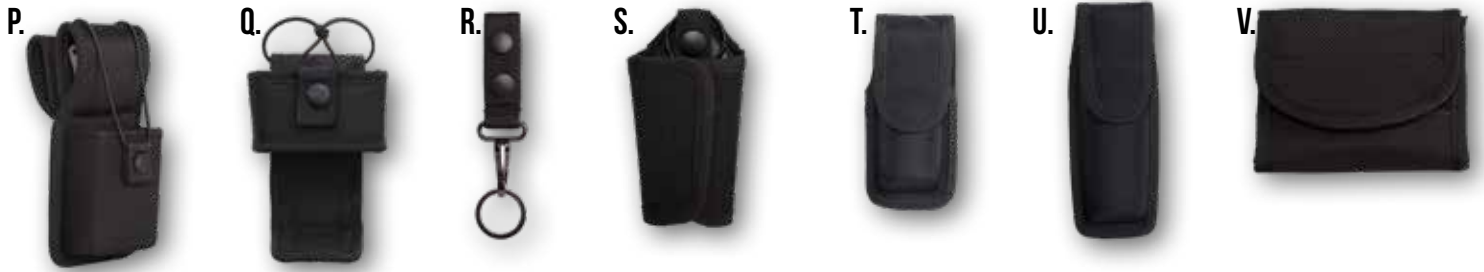
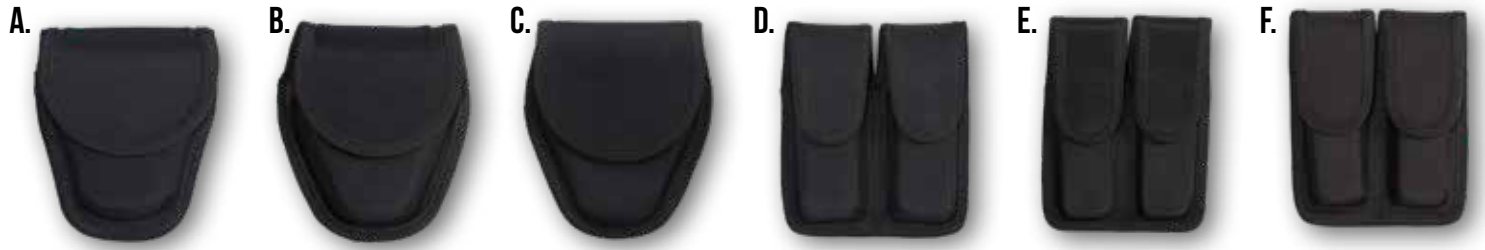
Colors: Black | Size Chart: Shoes

**B** BLACK

# DUTY GEAR









## HANDCUFF CASES

A. Single Handcuff Case	TG003
B. Double Handcuff Case	TG002
C. Single Hinged Handcuff Case	TG023

## MAGAZINE POUCHES

D. 10mm / .45 Stacked (1)	TG004-1
E. 9mm / .40 Staggered (2)	TG004-2
F. 10mm / .40 Staggered (3)	TG004-3

## BATON HOLDERS

G. PR24 Holder	TG016
H. 26" Expandable Holder	TG009
I. 21" Expandable Holder	TG010

## FLASHLIGHT HOLDERS

J. Stinger Mini Flashlight	TG006
K. AA Mini Flashlight	TG008
L. D-Cell Flashlight	TG015
M. Stinger Open Top	TG024

## BELT KEEPERS (4 PACK)

N. Belt Keepers	TG017
-----------------	-------

## RADIO HOLDERS

O. Standard Universal Holder	TG019
P. Swivel Universal Holder	TG021
Q. Adjustable Holder with Foot	TG025

## KEY RING HOLDERS

R. Standard Key Ring Holder	TG022
S. Silent Key Ring	TG014

## PEPPER SPRAY HOLDERS

T. MK-3 Small Pepper Spray	TG005-III
U. MK-4 Large Pepper Spray	TG005-IV

## POUCHES

V. Latex Glove Pouch	TG007
W. Alarm Pouch	TG012
X. Pager / Glove Pouch	TG013
Y. Double Speed Loader	TG018

## HOLSTERS

Z. MK-9 Leg Holster	TG020
---------------------	-------

## DUTY BELTS

AA. Molded Nylon Duty Belt (4)	TG001
AB. Liner Belt (5)	TG01
AC. Tri-release Replacement Buckle	TGBUCKLE

(1) Colt GVT, H&K P7-M8, Sig Sauer P220-P225, Ruger P90, S&W 1006, 3904, 3906, 4506

(2) BERETTA, 92-F-96F, Glock 17-19-22-23, Sig Sauer P226, P228, P229, S&W 4006, 5406, SW40F

(3) Glock 20-21, H&K USP

(4) 100% Durable ballistic Nylon weave with Sturdy tri-release buckle. Fully loop-lined to create keeperless system when used with liner belt. Sizes: S (28"-34"), M (34"-40"), L (40"-46"), XL (46"-52"), 2XL (52"-58"), 3XL (58"-64")

(5) 100% Durable ballistic Nylon weave with Velcro closure. Fully hook-lined to create keeperless system when used with liner belt. Sizes: S (28"-34"), M (34"-40"), L (40"-46"), XL (46"-52"), 2XL (52"-58"), 3XL (58"-64")



# BAGS





Black tactical watch

Hand holding the bag

Sunglasses

Black gloves

Small label on the bag

Clear pocket on the bag



**TACT SQUAD**

**DELUX PATROL BAG**

- > Water and abrasion resistant
- > 5 cleated footpads create a durable base and reduce fraying if bag is dragged
- > Sturdy tri-release shoulder strap buckles are secured with box and cross stitching for extra durability
- > Rigid inserts and extra padding on sides and bottom provide exceptional protection of your gear
- > Rigid main compartment divider included
- > multiple pockets and holders on sides and lid
- > Premium nylon lining makes it easy to clean
- > Top unzips for easy customization -- add your name or company logo

**TG320 | Delux Patrol Bag**

Colors: Black

**B** BLACK





## **TACT SQUAD**

### **LOCKER STOCKER**

- › Measures 11" W x 53"
- › Six pen pockets
- › One durable mirror
- › One cell phone pocket
- › One miscellaneous pocket for notepads, office supplies, etc.
- › One heavy-duty clip for holding keys
- › One radio holder
- › One stinger flashlight holder
- › Two magazine pouches
- › One heavy-duty dot-snap handcuff holder
- › One large flashlight ring holder
- › One collapsible baton holder
- › Molle system behind flashlight ring for convenience
- › One large ticket book holder with Velcro closure
- › One large well pocket at bottom to hold duty boots and shoes
- › Two heavy-duty clips at top to connect to locker

#### **TG360 | Locker Stocker**

Colors: Black

**B** BLACK





**TACT SQUAD**  
**CAR SEAT ORGANIZER**

- > Measures 22" W x 17" H x 7.5" D
- > PVC coated backing for stiffness and to help prevent wearing
- > Adjustable shoulder strap allows bag to be secured to passenger car seat
- > Zippered center compartment with dividers
- > Large top opening with accordion dividers
- > Front equipment pockets
- > Pen and notepad pockets
- > Large side pockets
- > Clear ID pocket on top center

**TG310 | Car Seat Organizer**  
Colors: Black

**B** BLACK



**TACT SQUAD**  
**WAR BAG**

- > Fabric: 1680 Denier Nylon construction
- > Large double zippered main compartment
- > Collapsible full-size helmet compartment
- > 3 front organizer pockets, zipper pocket, and side pocket
- > Flashlight and mag pockets
- > Adjustable shoulder strap that detaches
- > 3 Nylon web Velcro straps

**TG300 | War Bag**  
Colors: Black

**B** BLACK





**TACT SQUAD**

**GEAR BAG**

- > Measures 18" W x 10.5" H x 10" D
- > 1,890 cubic inches of storage space
- > Reinforced bottom
- > Detachable shoulder strap
- > Side pockets with hook and loop closures
- > Sturdy carry handles
- > MOLLE attachment system on front

**TG330 | Gear Bag**

Colors: Black

**B** BLACK



**TACT SQUAD**

**GARMENT BAG**

- > 2.5" top hanger slot
- > 2 carry handles
- > Visible business card display window
- > Mesh lined zipper storage compartment
- > Lower shoe compartment

**TG340 | Gear Bag**

Colors: Black

**B** BLACK



# ACCESSORIES









**TACT SQUAD**  
NEOPRENE UNIFORM GLOVES

- > Fabric: Water resistant Neoprene with synthetic leather palm
- > Adjustable Velcro wrist closure
- > Non-slip Velcro closure on wrist

**TG100 | Neoprene Uniform Gloves**  
Colors: B | Sizes S, M, L, X, 2XL

**B** BLACK



**TACT SQUAD**  
NEOPRENE GLOVES W/ KEVLAR

- > Fabric: Water resistant Neoprene with synthetic leather palm
- > Lined with Kevlar® for extra protection against cuts and flash flames
- > Adjustable Velcro wrist closure
- > Non-slip synthetic leather palms

**TG110 | Neoprene Gloves with Kevlar**  
Colors: B | Sizes S, M, L, X, 2XL

**B** BLACK



**TACT SQUAD**  
COWHIDE LEATHER GLOVES

- > Fabric: 100% cowhide leather
- > Elasticized cuff
- > Quality stitch construction

**TG120 | Cowhide Leather Gloves**  
Colors: Black | Sizes S, M, L, X, 2XL

**B** BLACK



**TACT SQUAD**  
MULTIPURPOS DUTY GLOVES

- > Fabric: Lightweight Lycra / Nylon blend
- > Versatile glove is ideal for most duty uses
- > Non-slip palm and fingertip patches
- > Hook and loop wrist closure

**TG130 | Multipurpose Duty Gloves**  
Colors: Black | Sizes S, M, L, X, 2XL

**B** BLACK



## TACT SQUAD

### POLYESTER CLIP-ON TIES

- > Fabric: 100% textured Polyester
- > 3 in. wide
- > Button-hole on small end

#### TIE16 | 16in Polyester Clip-On Tie

Colors: DN, B, BR | Sizes S, M, L, X, 2XL

#### TIE18 | 18in Polyester Clip-On Tie

Colors: DN, B, BR | Sizes S, M, L, X, 2XL

#### TIE20 | 20in Polyester Clip-On Tie

Colors: DN, B, BR | Sizes S, M, L, X, 2XL

#### TIE22 | 22in Polyester Clip-On Tie

Colors: DN, B, BR | Sizes S, M, L, X, 2XL

**DN** DARK NAVY   **B** BLACK   **BR** BROWN



## TACT SQUAD

### POLYESTER CROSS OVER TIE

- > Fabric: 100% textured Polyester
- > 3 in. wide
- > Button-hole on small end

#### TIECO | Women's Textured Polyester Cross Over Tie

Colors: DN, B, BR | One Size Fits All

**DN** DARK NAVY   **B** BLACK   **BR** BROWN

800.858.6755





**LAPD**  
STYLE

**TACT SQUAD**  
**ROUND DUTY CAP**

- > Fabric: 100% Wool
- > Full fabric top with open cane band; basket weave design
- > Hi-Gloss visor
- > Visor strap is 1/2 in.
- > Straps offered in metallic gold, silver, or hi-gloss shiny black
- > P buttons in silver finish
- > 2 horizontal badge eyelets, 1 1/2 in. apart
- > Inside identification pocket

**C106 | Round Duty Cap**  
Colors: DN | Sizes S, M, L, X, 2XL

**DN** DARK NAVY



**NYPD**  
STYLE

**TACT SQUAD**  
**SHORT BILL 8 POINT DUTY CAP**

- > Fabric: 100% Polyester, textured
- > NY gold metal side buttons
- > 1 hole badge eyelet
- > Side vent
- > Inside identification pocket

**C102 | Short Bill 8-Point Duty Cap**  
Colors: DN | Sizes S, M, L, X, 2XL

**DN** DARK NAVY



**TACT SQUAD**  
**WATCH CAP**

- > Provides lightweight warmth
- > Available Plain (no embroidery) or with SECURITY embroidery in choice of white or gold lettering.

**B** BLACK **DN** DARK NAVY

SKU	Description	Colors
C105B	Watch Cap	Black
C105N	Watch Cap	Navy
C105NSW	Watch Cap w SECURITY	Navy / White Lettering
C105NSG	Watch Cap w SECURITY	Navy / Gold Lettering
C105BSW	Watch Cap w SECURITY	Black / White Lettering
C105BSG	Watch Cap w SECURITY	Black / Gold Lettering



## **TACT SQUAD**

### **TG850 LED FLASHLIGHT**

- › Max output 850 lumen
- › Water resistant
- › Impact resistant 1.5m
- › Weight 2.73 ounces (77.5 grams) with out batteries
- › Uses one (1) 18650 Li-Ion or two (2) CR123A batteries
- › Digitally regulated output - maintains constant brightness
- › Slip-resistant body design
- › Made of durable aircraft grade aluminum
- › Premium hard-anodized anti-abrasive finish
- › Toughened ultra-clear glass lens with anti-reflective coating
- › Tactical lanyard with Two replacement O-rings

### **TG850 | LED Flashlight**



## **TACT SQUAD**

### **LED TRAFFIC BATON**

- › Ideal for parking, pedestrian and traffic control
- › Durable high-impact plastic housing with textured grip
- › Modes: flashing red, steady red, flashlight
- › 3 super-bright white LEDs in tip create a convenient flashlight
- › 21.5" length with 13" light shaft
- › Uses 3 C-cell batteries (not included)

### **L3150 | LED Traffic Baton w Flashlight**



# THANK YOU

**THANK YOU TO ALL OF OUR VENDORS, DISTRIBUTORS, CUSTOMERS, FANS AND EVERYBODY ELSE WHO CONTINUES TO MAKE OUR BUSINESS A SUCCESS. THANK YOU FOR YOUR PATRONAGE. IT IS OUR HOPE THAT WE CAN CONTINUE TO SERVE OUR DEDICATED CUSTOMERS IN THE YEARS TO COME.**



**SHIRTS**

- 08 100% POLYESTER UNIFORM SHIRT
- 09 TWO-TONE 100% POLYESTER SHIRT W/ HIDDEN ZIPPER
- 10 POLYESTER / COTTON UNIFORM SHIRT
- 11 TWO-TONE POLY / COTTON UNIFORM SHIRT W/ HIDDEN ZIPPER
- 12 POLY/COTTON NYPD UNIFORM SHIRT (LONG SLEEVE)
- 12 POLY/COTTON NYPD UNIFORM SHIRT (SHORT SLEEVE)
- 13 DELUXE TRANSIT SHIRT
- 13 OXFORD DRESS SHIRT
- 14 POLY/WOOL DUTY SHIRT
- 14 STREET LEGAL SHIRT
- 15 RIPSTOP BDU SHIRT
- 15 LIGHTWEIGHT TACTICAL RIPSTOP SHIRT
- 16 TACT PRO 2.0 POLO SHIRT
- 17 SECURITY POLO SHIRT
- 17 STANDARD POLO SHIRT

**TROUSERS**

- 20 POLYESTER UNIFORM TROUSERS
- 20 ELASTIQUE UNIFORM TROUSERS
- 21 POLYESTER UNIFORM TROUSERS W/ CARGO POCKETS
- 21 NEW YORK STYLE UNIFORM TROUSERS
- 22 POLY/COTTON UNIFORM TROUSERS
- 22 NEW JERSEY TROUSERS W CARGO POCKETS
- 23 POLY/WOOL ADMIN TROUSERS
- 23 POLY/COTTON NYPD DUTY TROUSERS
- 24 POLYESTER ELASTIQUE TRANSIT TROUSERS
- 24 EMS/EMT UTILITY TROUSERS
- 25 LIGHTWEIGHT RIPSTOP EMS TROUSERS
- 26 STREET LEGAL TROUSERS
- 27 LIGHTWEIGHT RIPSTOP TACTICAL TROUSERS

**OUTERWEAR**

- 30 UNIFORM BLAZER
- 31 JOB SHIRT 2.0
- 32 COMMANDO V-NECK
- 32 COMMANDO V-NECK
- 33 FLANNEL-LINED WINDBREAKER
- 33 CLASSIC SECURITY WINDBREAKER
- 33 NYLON SHELL RAID JACKET
- 34 DUTY JACKET
- 34 CLASSIC DUTY JACKET
- 35 POLICE BOMBER JACKET
- 35 BOMBER JACKET
- 36 PATROL BOMBER JACKET
- 36 TACT GEN JACKET
- 37 SECURITY PARKA W REMOVABLE HOOD
- 37 THREE SEASON JACKET
- 40 POLYURETHANE RAINCOAT
- 40 PVC RAINCOAT
- 41 REVERSIBLE WATERPROOF RAINCOAT

**FOOTWEAR**

- 44 HI-GLOSS UNIFORM OXFORD SHOES
- 44 LEATHER UNIFORM OXFORD SHOES
- 45 8" SENTRY SIDE-ZIP BOOTS
- 45 6" SENTRY SIDE-ZIP BOOTS

**DUTY GEAR**

- 49 HANDCUFF CASES
- 49 MAGAZINE POUCHES
- 49 BATON HOLDERS
- 49 FLASHLIGHT HOLDERS
- 49 BELT KEEPERS (4 PACK)
- 49 RADIO HOLDERS
- 49 KEY RING HOLDERS
- 49 PEPPER SPRAY HOLDERS
- 49 POUCHES
- 49 HOLSTERS
- 49 DUTY BELTS



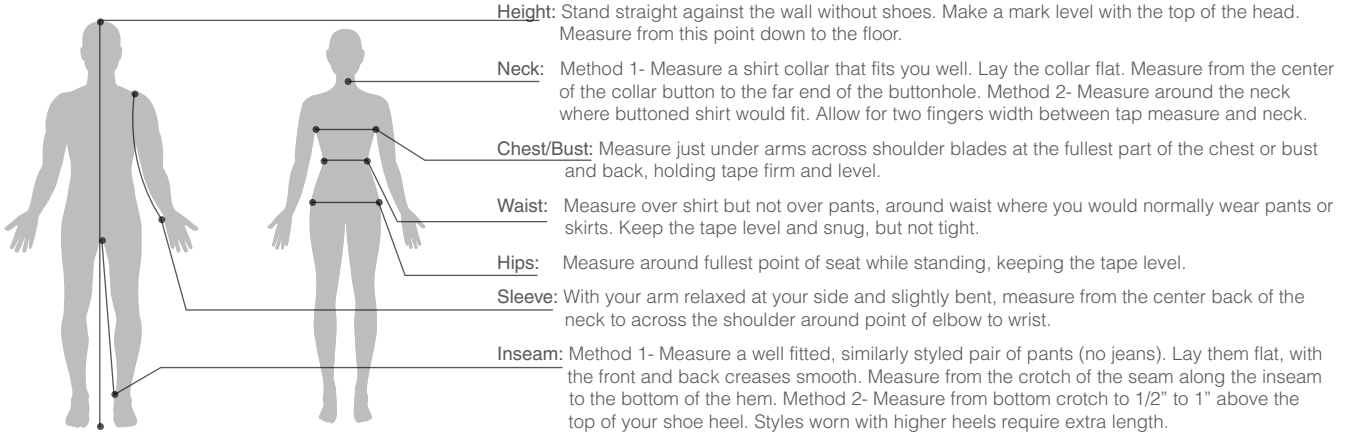
## **BAGS**

- 52 DELUX PATROL BAG
- 53 LOCKER STOCKER
- 54 CAR SEAT ORGANIZER
- 54 WAR BAG
- 55 GEAR BAG

## **ACCESSORIES**

- 55 GARMENT BAG
- 58 COWHIDE LEATHER GLOVES
- 58 NEOPRENE GLOVES W/ KEVLAR
- 59 POLYESTER CLIP-ON TIES
- 59 POLYESTER CROSS OVER TIE
- 60 ROUND DUTY CAP
- 60 SHORT BILL 8 POINT DUTY CAP
- 60 WATCH CAP
- 61 LED TRAFFIC BATON
- 61 TG850 LED FLASHLIGHT





To ensure you receive the best possible fit, write down your measurements using the instructions above. Determine which size category you fall into by comparing your measurements with those listed in the charts below. If your measurements fall between two sizes, it is recommended you take the larger size.  
 Height equivalents: shorts up to 5'7", regulars are 5'8"-6'0", longs are 6'1" and taller.

**Men's Conversion Chart**

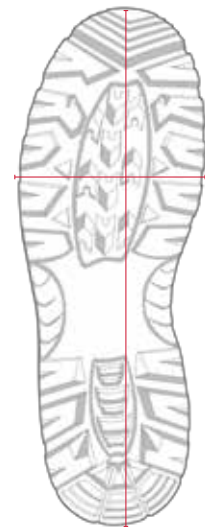
	XS		S		M		L		XL		2XL		3XL	
NECK	13	13.5	14	14.5	15	15.5	16	16.5	17	17.5	18	18.5	19	19.5
CHEST	32	34	36	38	40	42	44	46	48	50	52	54	56	58
SLEEVE	31	32	32.5	33	33.5	34	34.5	35	35.5	36	36.5	37	37.5	38
WAIST	24	26	28	30	32	34	36	38	40	42	44	46	48	50

**Women's Conversion Chart**

	XS		S		M		L		XL		2XL	
NECK	2	4	6	8	10	12	14	16	18	20	22	24
WAIST	24	25	26	27	28	29	31	33	35	37	39	41
HIP	33.25	34.25	35.25	36.25	37.25	39.25	41.25	43.25	45.25	47.25	49.25	51.25
THIGH	18.75	19.25	19.75	20.25	21.25	22.25	22.75	23.75	24.75	25.75	26.75	27.75
BUST	31	32	33	34	35	36	38	40	42	44	46	48
SLEEVE	28	28.5	29	29.5	30	30.5	31	31.5	32	32.5	33	33.5

**SHOE AND BOOT SIZES**

USA		UK		EURO		SHOES		BOOTS	
MEN'S	WOMEN'S	MEN'S	WOMEN'S	MEN'S	WOMEN'S	REG	WIDE	REG	WIDE
3	4.5	2.5	1	36	35	●			
4	5.5	3.5	2	37	25-36	●		●	
5	6.5	4.5	3	38	37	●		●	
5.5	7	5	3.5	38-39	37-38	●		●	
6	7.5	5.5	4	39	38	●		●	
6.5	8	6	4.5	39	38-39	●		●	
7	8.5	6.5	5	40	39	●	●	●	●
7.5	9	7	5.5	40-41	39-40	●	●	●	●
8	9.5	7.5	6	41	40	●	●	●	●
8.5	10	8	6.5	41-42	40-41	●	●	●	●
9	10.5	8.5	7	42	41	●	●	●	●
9.5	11	9	7.5	42-43	41-42	●	●	●	●
10	11.5	9.5	8	43	42	●	●	●	●
10.5	12	10	8.5	43-44	42-43	●	●	●	●
11	12.5	10.5	9	44	43	●	●	●	●
11.5	13	11	9.5	44-45	43-44	●	●	●	●
12	13.5	11.5	10	45	44	●	●	●	●
13	14.5	12.5	11	46	45	●	●	●	●
14	15.5	13.5	12	47	46	●	●	●	●
15	16.5	14.5	13	48	47	●	●		



**Determining your shoe size**

Use a ruler or tape measurer to measure your foot (from the heel to the tip of your longest toe).

Choose a table from the left (U.S. to find your U.S. size, U.K. to find your U.K. size, Euro to find your European size).

Find the closest measurement, in inches, that is equal to or greater than the length of your foot. For example, a man whose foot measures 11-1/4 inches is a U.S. 12, a U.K. 12, or a European 47

\*Tact Squad shoes and boots are available in several sizes, but not in all wide sizes. Please review the above chart to determine which footwear best suites your build. Bullets indicate that we carry specified size.





# TACT SQUAD

 /TACTSQUAD/

 /OFFICIALTACTSQUAD/

800.858.6755

[WWW.TACTSQUAD.COM](http://WWW.TACTSQUAD.COM)

250 N. BENJAMIN DR., CORONA, CA 92879

# AMWEAR USA

Tact Squad is part of the Amwear USA family of brands. For more quality law enforcement uniforms check out our United Uniform Manufacturers 2018 Product guide.

