



TACTICAL SQUAD

COMPLETE
PRODUCT GUIDE

2020



TACT SQUAD

Proudly designing and manufacturing quality uniforms for first responders across the United States for over 17 years.

Tact Squad is a leading uniform manufacturing company that specializes in law enforcement and public safety uniforms, duty gear, footwear and accessories.

Based out of our corporate headquarters in beautiful Corona, California, it is our mission is to provide the brave men and women who wear our uniforms durability and dependability that match the same standard of performance that they are held to.

Because we own and operate our own factories both in the United States and overseas, it allows our focus remain in providing quality products to users that meet and exceed the strictest of manufacturing specifications.

ICON LEGEND:



POLICE / SECURITY



FIRE



EMERGENCY MEDICAL SERVICES



TACTICAL



TRANSIT



NYPD APPROVED



INDUSTRIAL LAUNDRY FRIENDLY

Combine the item number and the color code to determine the correct SKU for ordering:

Part Number Color Code Product SKU
T7512 + KH = T7512KH

T7512 Lightweight Ripstop Tactical Trousers
Colors: DN, BK, **KH** OG, BR | Size charts - E2

DN

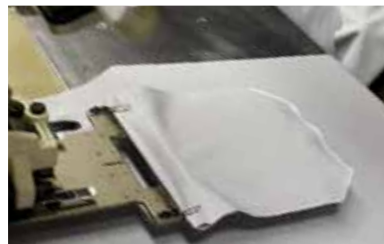
DARK
NAVY

BK

BLACK

KH

OG
KHAKI



04/ NEW ITEMS
06/ SHIRTS
18 / TROUSERS
28/ OUTERWEAR
42/ FOOTWEAR
46/ DUTY GEAR
50/ BAGS
56/ ACCESSORIES
64/ INDEX
66/ SIZE CHARTS





TACT SQUAD

JOB SHIRT 2.0

PG. 31

- › Fabric: 80% Cotton / 20% Polyester
- › Fleece inner lining
- › Lower placket mic tab
- › Dual shoulder mic tabs
- › Concealable D-ring
- › Dual hidden chest pockets
- › Patch friendly pen pockets
- › Large elbow canvas patches
- › Dual lower hand pockets
- › Matching collar
- › Machine wash or dry clean

2005 | Men's Job Shirt 2.0

Colors: N | Size Charts - N *No XXS, 6X

N NAVY



TACT SQUAD

TG850 LED FLASHLIGHT

PG. 61

- › Max Output 850 Lumen
- › Water resistant
- › Impact resistant 1.5m
- › Weight 2.73 ounces (77.5 grams) without batteries
- › Uses one (1) 18650 Li-Ion or two (2) CR123A batteries
- › Digitally regulated output - maintains constant brightness
- › Slip-resistant body design
- › Made of durable aircraft grade aluminum
- › Premium hard-anodized anti-abrasive finish
- › Toughened ultra-clear glass lens with anti-reflective coating
- › Tactical lanyard with two replacement O-rings

TG850 | LED Flashlight



TACT SQUAD

6" AND 8" SENTRY SIDE-ZIP BOOTS

PG. 45

- › Leather / Nylon upper
- › Heavy-duty YKK® side zipper with hook and loop closures
- › Tact-Step™ cushioned removable insole
- › Slip and skid resistant outsole
- › Padded collar for added comfort

S300 | 6" Sentry Side-Zip Boots

Colors: BK | Size Chart: Shoes

S310 | 8" Sentry Side-Zip Boots

Colors: BK | Size Chart: Shoes

BK BLACK



TACT SQUAD

LIGHTWEIGHT TACTICAL RIPSTOP SHIRT

PG. 15

- › Fabric: 65% Polyester / 35% Cotton, Lightweight Ripstop 4.25 - 4.5 oz.
- › Treated with Tactguard™ Fabric Protector to resist water, oils, and other fluids
- › Optional name tapes (2) and badge tab provided
- › Permanent collar stays
- › 7 button front with hidden YKK zipper matching shirt color
- › Two breast pockets
- › Two concealed map/document pouches beneath breast pockets
- › Two button adjustable cuff
- › Side seam mic. cord panels
- › Breathable gusseted arm pits
- › Reinforced elbows

T8512 | Lightweight Tactical Ripstop Shirt

Colors: DN, KH | Size charts - A2 *No XXS, XS, 6X

DN

DARK
NAVY

KH

KHAKI



TACT SQUAD

LIGHTWEIGHT RIPSTOP TACTICAL TROUSERS

PG. 27

- › Fabric: 65% Polyester / 35% Cotton, 6.5 oz per sq. yd. / 10 oz. per linear yd.; lightweight Ripstop fabric
- › Tactguard™ Fabric Protector allows resistance to water, oil, and stains
- › At-Ease™ slide adjustment waistband guarantees your trousers will always fit
- › Gusseted crotch
- › Double reinforced knee panels
- › 2 cargo pockets with ergonomically designed flaps and internal box pleats
- › Accessible cell phone / pistol mag pocket on both sides
- › Heavy-duty YKK® zippers
- › Snap waist closure with French fly
- › Double reinforced pocket corners
- › Women's style features low-rise design
- › Back welt pockets with flaps
- › Separated belt loops to allow attachment of badge
- › Machine washable

T7512 | Lightweight Ripstop Tactical Trousers

Colors: DN, BK, KH, OG, BR | Size charts - E2

DN

DARK
NAVY

BK

BLACK

KH

KHAKI

OD

OD GREEN

BR

BROWN

SHIRTS





**TACT SQUAD****100% POLYESTER UNIFORM SHIRT**

- › Fabric: 100% Polyester, 5-5.5 oz. per square yd. / 9.5 per linear yd.; Tropical weave
- › Stitched-in military creases
- › Pleated pockets with scalloped flaps; pen opening in left pocket
- › Hook and loop closures on both pockets
- › Cross-stitched epaulets unbutton to allow the use of shoulder loops
- › Badge eyelets with internal support
- › Extra long tail
- › Machine wash or dry clean, Industrial Laundry Friendly (up to 50 washes)

W WHITE
 T TAN
 NKL NICKEL GRAY
 GV GRAY
 SLG SLATE GRAY
 B BLACK
 L LIGHT BLUE
 FB FRENCH BLUE
 N NAVY

SKU	Gender	Description	Fabric	Features	Style	Colors	Size Chart
8012	Men's	100% Polyester Short Sleeve Uniform Shirt	100% Polyester	Sports Collar	Short Sleeve	W, T, NKL, GV, SLG, B, L, FB, N	B2
8002	Men's	100% Polyester Long Sleeve Uniform Shirt	100% Polyester	Banded Collar	Long Sleeve	W, T, NKL, GV, SLG, B, L, FB, N	A2



TACT SQUAD

TWO-TONE 100% POLYESTER SHIRT W/ HIDDEN ZIPPER

- › Fabric: 100% Polyester, 5-5.5 oz. per sq. yd. / 9.5 per linear yd.; Tropical weave
- › Contrasting pocket flaps and epaulets available in four color combinations
- › Hidden front zipper with faux button placket
- › Stitched-in military creases
- › Badge eyelets with internal support
- › Extra long tail
- › Pleated pockets with scalloped flaps
- › Pen opening in left pocket
- › Machine wash or dry clean (up to 50 washes)



TWO-TONE SHIRTS & HIDDEN ZIPPERS

Both our two-tone uniform shirts come with a hidden zipper for a simple and easy closure option to your shirt.

LN LIGHT BLUE /NAVY
 GB GRAY /BLACK
 WN WHITE /NAVY
 WB WHITE /BLACK

SKU	Gender	Description	Fabric	Features	Style	Colors	Size Chart
8012	Men's	100% Polyester Short Sleeve Uniform Shirt	100% Polyester	Sports Collar	Short Sleeve	LN, GB, WN, WB	B2
8002	Men's	100% Polyester Long Sleeve Uniform Shirt	100% Polyester	Banded Collar	Long Sleeve	LN, GB, WN, WB	A2

**TACT SQUAD****POLYESTER / COTTON UNIFORM SHIRT**

- › Fabric: 65% Polyester / 35% Cotton, 4.25 oz. per sq. yd. / 7 oz. per linear yd.; Tropical weave
- › Stitched-in military creases
- › Pleated pockets with scalloped flaps; pen opening in left pocket
- › Hook and loop closures on both pockets
- › Cross-stitched epaulets unbutton to allow the use of shoulder loops
- › Badge eyelets with internal support
- › Extra long tail
- › Machine washable

W WHITE
 T TAN
 NKL NICKEL GRAY
 GY GRAY
 L LIGHT BLUE
 NJ FRENCH BLUE
 N NAVY

*No XXS-XS

SKU	Gender	Description	Fabric	Features	Style	Colors	Size Chart
8013	Men's	Poly / Cotton Uniform Shirt	65% Polyester / 35% Cotton	Sports Collar	Short Sleeve	W, T, NKL, GY, L, NJ, N	B2
8013W	Women's	Poly / Cotton Uniform Shirt	65% Polyester / 35% Cotton	Sports Collar	Short Sleeve	W, L, N	D
8003	Men's	Poly / Cotton Uniform Shirt	65% Polyester / 35% Cotton	Banded Collar	Long Sleeve	W, T, NKL, GY, L, NJ, N	A2
8003W	Women's	Poly / Cotton Uniform Shirt	65% Polyester / 35% Cotton	Banded Collar	Long Sleeve	W, L, N	C



TACT SQUAD

TWO-TONE POLY / COTTON UNIFORM SHIRT W/ HIDDEN ZIPPER

- › Fabric: 65% Polyester / 35% Cotton, 5-5.5 oz. per sq. yd. / 9 oz per linear yd.; Tropical weave
- › Pocket flaps and epaulets available in four color combinations
- › Hidden front zipper with faux button placket
- › Stitched-in military creases
- › Badge eyelets with internal support
- › Extra long tail
- › Pleated pockets with scalloped flaps; pen opening in left pocket
- › Machine washable

LN LIGHT BLUE / NAVY
 GB GRAY / BLACK
 WN WHITE / NAVY

*No XXS-XS

SKU	Gender	Description	Fabric	Features	Style	Colors	Size Chart
8013	Men's	Poly / Cotton Uniform Shirt	65% Polyester / 35% Cotton	Sports Collar	Short Sleeve	LB, GB, WN	B2
8003	Men's	Poly / Cotton Uniform Shirt	65% Polyester / 35% Cotton	Banded Collar	Long Sleeve	LB, GB, WN	A2



TACT SQUAD

POLY/COTTON NYPD UNIFORM SHIRT

- › Fabric: 65% Polyester / 35% Cotton; 9.5-10 oz, Tropical Weave
- › Class A dress shirt
- › Permanent collar stays
- › 1.75 in. spaced badge tab
- › Collar has 2 eyelet holes to accommodate brass
- › 7 button front
- › Pleated pockets, scalloped flaps, hook and loop closures
- › Pen opening in left breast pocket
- › Available with badge holder and metal eyelets in pouch
- › Cross-stitched shoulder epaulets
- › Available in men and women
- › Machine washable

F830 | Men's NYPD Uniform Long Sleeve Shirt

Colors: N, MB | Size charts - A2 *No XXS-XS

F830W | Women's NYPD Uniform Long Sleeve Shirt

Colors: NW, MBW | Size charts - C

N

NAVY

MB

MEDIUM BLUE



TACT SQUAD

POLY/COTTON NYPD UNIFORM SHIRT

- › 65% Polyester / 35% Cotton; 9.5-10 oz Tropical Weave
- › Class A dress shirt
- › Permanent collar stays
- › 1.75 in. spaced badge tab
- › Collar has 2 eyelet holes to accommodate brass
- › 7 button front
- › Pleated pockets, scalloped flaps, hook and loop closures
- › Pen opening in left breast pocket
- › Available with badge holder and metal eyelets in pouch
- › Cross-stitched shoulder epaulets
- › Available in men and women
- › Machine washable

F831 | Men's NYPD Uniform Short Sleeve Shirt

Colors: N, MB | Size charts - B2 *No XXS-XS

F831W | Women's NYPD Uniform Short Sleeve Shirt

Colors: NW, MBW | Size charts - D *No size 48 available

N

NAVY

MB

MEDIUM BLUE



TACT SQUAD

DELUXE TRANSIT SHIRT

- › Fabric: 65% Polyester / 35% Cotton, heavy-duty 4.75 - 5 oz. per sq. yd. / 8 oz per linear yd.; Tropical weave
- › (Short Sleeve) Square tail allows shirt to be worn untucked, but maintain uniform appearance
- › Wrinkle resistant finish
- › Convertible collar provides a professional look
- › 2 open-top flapped pockets
- › Machine washable

8301 | Men's Delux Transit Short Sleeve Shirt

Colors: LB | Size charts - B2 *No XXS, XS, 6XL

8301LW | Women's Delux Transit Short Sleeve Shirt

Colors: LB | Size charts - D *No XXS, XS, 6XL

8300 | Men's Delux Transit Long Sleeve Shirt

Colors: LB | Size charts - A2 *No XXS, XS, 6XL

8300LW | Women's Delux Transit Long Sleeve Shirt

Colors: LB | Size charts - C

LB LIGHT
BLUE



TACT SQUAD

OXFORD DRESS SHIRT

- › Fabric: 60% Cotton / 40% Polyester
- › Great for corporate security, hospitality or general office wear
- › Banded button down collar
- › Left chest pocket
- › Wrinkle and stain resistant
- › Machine washable

8015 | Oxford Dress Short Sleeve Shirt

Colors: W, LB | Size charts - B2 *No XXS, XS, 6XL

8005 | Oxford Dress Long Sleeve Shirt

Colors: W, LB | Size charts - J

W WHITE **LB** LIGHT
BLUE



TACT SQUAD

POLY/WOOL DUTY SHIRT

- › 75% Polyester / 25% Worsted Wool; 11.5-12 oz Tropical Weave
- › Lined banded collar with internal stays
- › Collar has 2 eyelet holes to accommodate brass (1.75 in spacing)
- › Pleated pockets, scalloped flaps, hook and loop closures
- › Pen opening in left pocket
- › Eyelet badge holder with support strap
- › Cross-stitched shoulder straps
- › Supercrease® to maintain crispness
- › Extra long shirt tails

F803 | Men's Long Sleeve Poly/Wool Duty Shirt

Colors: N | Size charts - A2 *No XXS, XS, 6X

FW803 | Women's Long Sleeve Poly/Wool Duty Shirt

Colors: N | Size charts - C *No XXS, XS, 6X

F813 | Men's Short Sleeve Poly/Wool Duty Shirt

Colors: N | Size charts - B2 *No XXS, XS, 6X

FW813 | Women's Short Sleeve Poly/Wool Duty Shirt

Colors: N | Size charts - D2 *No XXS, XS, 6X

N NAVY



TACT SQUAD

STREET LEGAL SHIRT

See Pg. 26
for matching pants.

- › Fabric: 65% Polyester / 35% Cotton, 7.5 oz per sq. yd. / 12.5 oz. per linear yd.; Twill Weave
- › Treated with Tactguard™ to resist water, oils, and other stains
- › Stitched-in creases in front and back for crispness
- › Pleated pockets with scalloped flaps and pen opening on left pocket
- › Hook and loop closures on both pockets
- › Convertible sports collar with permanent collar stays (short sleeve only)
- › Two button adjustable cuffs
- › Machine washable

T8004 | Long Sleeve Street Legal Shirt

Colors: DN, BK | Size charts - A2 *No XXS, XS, 6X

T8014 | Short Sleeve Street Legal Shirt

Colors: DN, BK | Size charts - B2 *No XXS, XS, 6X

DN DARK
NAVY

BK BLACK



See Pg. 26
for matching pants.

TACT SQUAD

RIPSTOP BDU SHIRT

- › Fabric: 65% Polyester / 35% Cotton, 6.5 oz per sq. yd. / 11 oz. per linear yd.; Ripstop fabric
- › Sewn to military specifications
- › Rectangular flaps and hidden button closure
- › Two pocket design available in navy and black colors only
- › Four pocket design available in woodland camo only
- › Adjustable cuff tabs
- › Pen opening in top left pocket
- › Double-stitched for durability
- › Concealed button front
- › Reinforced elbow patches and roll-up sleeve feature
- › Machine washable

T8010 | Men's Two Pocket Ripstop BDU Shirt | Long Sleeve

Colors: N, BK | Size charts - G *No XXS, XS

T8010WD | Men's Four Pocket Ripstop BDU Shirt | Long Sleeve

Colors: WD | Size charts - G *No XXS, XS, 6X

N NAVY **BK** BLACK **WD** WOODLAND



See Pg. 27
for matching pants.

TACT SQUAD

LIGHTWEIGHT TACTICAL RIPSTOP SHIRT

- › Fabric: 65% Polyester / 35% Cotton, Lightweight Ripstop 4.25 - 4.5 oz.
- › Treated with Tactguard™ Fabric Protector to resist water, oils, and other fluids
- › Optional name tapes (2) and badge tab provided
- › Permanent Collar Stays
- › 7 button front with hidden YKK zipper matching shirt color
- › Two breast pockets
- › Two concealed map/document pouches beneath breast pockets
- › Two button adjustable cuff
- › Side seam mic. cord panels
- › Breathable gusseted arm pits
- › Reinforced elbows

T8512 | Lightweight Tactical Ripstop Shirt

Colors: DN, KH | Size charts - A2 *No XXS, XS, 6X

DN DARK NAVY **KH** KHAKI



TACT SQUAD

TACT PRO 2.0 POLO SHIRT

- › Fabric: 94% Polyester / 6% Spandex
- › Fabric is stain, fade and wrinkle resistant
- › Collar stays for a cleaner, more professional appearance
- › Special wicking fabric dries faster than cotton and standard polyester
- › Mic holder on both shoulders and at the bottom of placket
- › Shrink, wrinkle and fade resistant
- › 3 button placket
- › Gusseted mesh underarm panels
- › Pen pockets on left sleeve
- › Machine washable



Mic holder at the bottom of placket



Pen pocket on left sleeve



Mesh armpit for breathability

T8505 | Men's Tact Pro 2.0 Polo Shirt

Colors: WH, BK, DN, DG, ST | Size Charts - N ***Available in XS; No 6X**

WH	WHITE	BK	BLACK	DN	DARK NAVY
DG	DARK GREEN	ST	SILVER TAN		



TACT SQUAD

SECURITY POLO SHIRT

- › Fabric: 60% Polyester / 40% Cotton interlock knit
- › Includes SECURITY lettering on front left chest and back
- › Available in 5 color combinations
- › 3 button placket
- › Knit collar and banded sleeves
- › Machine washable

8502 | Men's Security Polo Shirt

Colors: W, GY, GD, N, BK | Size Charts - N

W	WHITE /BLACK LETTERS	GY	GRAY /BLACK LETTERS
GD	GOLD /BLACK LETTERS	N	NAVY /GOLD LETTERS
BK	BLACK /WHITE LETTERS		

TACT SQUAD

STANDARD POLO SHIRT

- › Fabric: 60% Polyester / 40% Cotton interlock knit
- › 3 button placket
- › Knit collar and banded sleeves
- › Machine washable

8503 | Men's Standard Polo Shirt

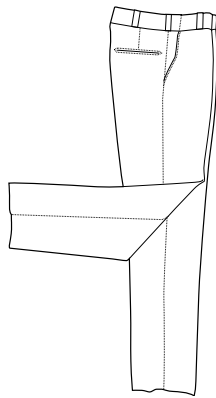
Colors: W, GY, GD, N, BK | Size Charts - N

W	WHITE	GY	GRAY	GD	GOLD
N	NAVY	BK	BLACK		

TROUSERS







TACT SQUAD

POLYESTER UNIFORM TROUSERS

- › Fabric: 100% Polyester, 7-7.5 oz. per sq. yd. / 12 oz. per linear yd.; Twill weave
- › At-Ease™ slide adjustment waistband
- › Lined 7/8" inserted belt loops
- › Quarter-top front pocket
- › Heavy-duty YKK® zipper
- › 2 back pockets with button tab on left pocket
- › Bar tacks at stress points for durability
- › Industrial Laundry Friendly (up to 50 washes)
- › Machine washable

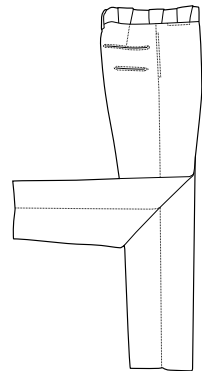
7002 | Men's Polyester Uniform Trousers *Size 26 Available

Colors: NE, BE, HE, BRE, SGE, GYE, STE | Size charts - E

7002W | Women's Polyester Uniform Trousers

Colors: NE, BE, HE, BRE | Size charts - F

NE	NAVY	BE	BLACK	HE	HEATHER GRAY
BRE	BROWN	SGE	SPRUCE GREEN	GYE	GRAY
STE	SILVER TAN				



TACT SQUAD

ELASTIQUE UNIFORM TROUSERS

- › Fabric: 100% Polyester; Elastique weave
- › At-Ease™ slide adjustment waistband
- › 2" waistband with keystone belt loops
- › 2 billy/sap pockets
- › Extra deep back pockets with button tab
- › Heavy-duty YKK® zipper with French fly for additional support
- › Straight side pockets with watch pocket
- › Snug-tex waistband
- › Bar tacks at key stress points
- › Machine washable

7003 | Men's Elastique Uniform Trousers

Colors: N, G | Size charts - E

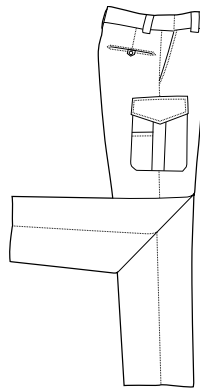
N	NAVY	G	GREEN
----------	------	----------	-------



3M™ reflective tape
with cargo flap tuck in



Hidden zipper
cargo pocket



TACT SQUAD

POLYESTER UNIFORM TROUSERS W/ CARGO POCKETS

- › Fabric: 100% Polyester, 7-7.25 oz. per sq. yd. / 12 oz per linear yd.; Twill weave
- › At-Ease™ slide adjustment waistband
- › Lined 7/8" inserted belt loops
- › Zippered cargo pockets with small outside pocket with hook and loop closure
- › Quarter-top front pockets
- › Heavy-duty YKK® zipper
- › 2 back pockets with button tab on left
- › 3M™ reflective tape when cargo flap is tucked in
- › Machine washable

T7007 Men's 100% Polyester Uniform Trousers with Cargo Pockets

Colors: DN, BK | size charts - E *No 62-66

DN DARK NAVY **BK** BLACK



TACT SQUAD

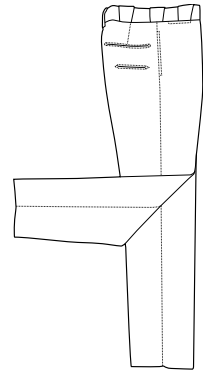
NEW YORK STYLE UNIFORM TROUSERS

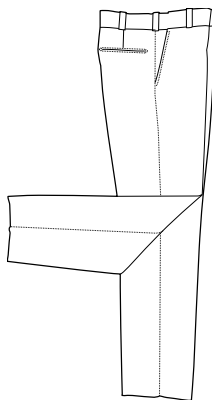
- › Fabric: 100% Polyester, 7-7.25 oz. per sq. yd. / 11.75 - 12 oz per linear yd.; Twill weave
- › At-Ease™ slide adjustment waistband
- › 6 pocket design
- › Straight style pockets
- › Heavy-duty YKK® zipper
- › Waistband designed for neatness
- › 1/2" black stripe down both legs
- › Bar tacks at all points to stress
- › Machine washable

7002NYE | Men's New York Style Elastique Uniform Trousers

Colors: DN | Size charts - E *No 60-66

DN DARK NAVY





TACT SQUAD

POLY/COTTON UNIFORM TROUSERS

- › Fabric: 65% Polyester / 35% Cotton, 7.5 oz. per sq. yd. / 12.5 oz per linear yd.; Twill weave
- › At-Ease™ slide adjustment waistband
- › Coated with Tactguard™ Fabric protection
- › 7/8" inserted belt loops
- › Two quarter front pockets and two back pockets
- › Bar tacks at stress points for durability
- › French fly with auto-lock brass zipper
- › Split seam tailored construction
- › Comfort fit pattern to accommodate athletic builds
- › Machine washable

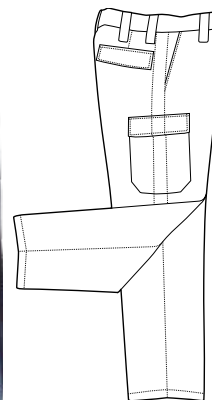
7012 | Men's Polyester Uniform Trousers

Colors: N, B | Size charts - E *No 64-66

7012W | Women's Polyester Uniform Trousers

Colors: N, B | Size charts - F *No 2, 26-30

N NAVY **B** BLACK



TACT SQUAD

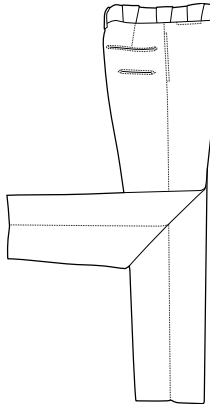
NEW JERSEY TROUSERS W/ CARGO POCKETS

- › Fabric: 65% Poloyester / 35% Cotton, 7.25 oz. per sq. yd. / 12 oz per linear yd.; Twill weave
- › At-Ease™ slide adjustment waistband
- › Tactguard™ fabric protector for stain resistance
- › Pre-stripped with French blue braid; meets New Jersey Department of Corrections specifications
- › 7 pocket design
- › 2 quarter-top front pockets
- › Utility cargo pockets with Velcro closure
- › Snug-tex waistband
- › Heavy-duty YKK® zipper
- › Machine washable

T7012NJ | Men's New Jersey Trousers w/ Cargo Pockets

Colors: DN | Size charts - E *No 62-66

DN DARK NAVY



TACT SQUAD

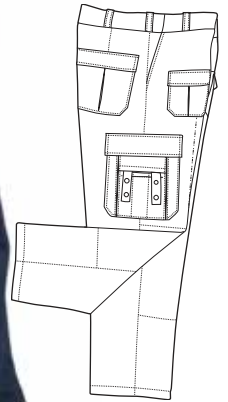
POLY/WOOL ADMIN TROUSERS

- › Fabric: 75% Polyester / 25% Worsted Wool; 11.5-12 oz Serge Weave
- › At-Ease™ slide adjustment waistband
- › Double hook and eye closures
- › Lined 7/8" inserted belt loops
- › On seam front pockets
- › 2 quarter front pocket and two back pockets
- › SAP / watch pocket
- › French fly for additional support
- › Supercrease® front and rear for crispness
- › Heavy-duty brass zipper
- › Triangle bar tacks on back pockets
- › Machine washable

F703 | Men's Poly/Wool Duty Trousers

Colors: DN | Size charts - E *No 48-66

DN DARK NAVY



TACT SQUAD

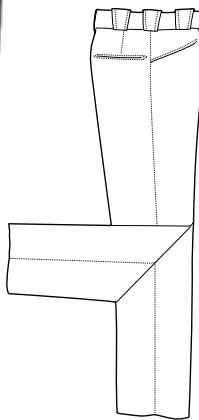
POLY/COTTON NYPD DUTY TROUSERS

- › Fabric: 65% Polyester / 35% Cotton; 7.8 oz Heavy-Duty Twill Weave
- › At-Ease™ slide adjustment waistband
- › Bar tacks at stress point for durability
- › French fly for added support
- › Memory lock on the brass zipper
- › 2 top opening back pockets with cargo flap
- › 2 front quarter top pockets
- › Stitched-in crease to maintain crispness
- › Extra pockets to accommodate accessories

F721DNE | Poly/Cotton NYPD Tactical Trousers

Colors: DN | Size charts - E *No 58-66

DNE DARK NAVY



TACT SQUAD

POLYESTER ELASTIQUE TRANSIT TROUSERS

- › Fabric: 100% Polyester; Elastique Weave
- › 4 pocket trouser with western style pockets
- › Heavy-duty YKK zipper
- › Snug-tex waistband helps to keep uniform shirt tucked in
- › 2 quarter top front pockets
- › Triangular bar tacking at stress points
- › French fly
- › Machine washable

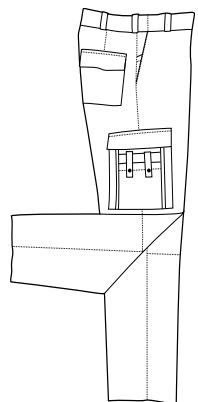
7033 | Men's Polyester Elastique Transit Trousers

Colors: N, B | Size charts - E *No 64-66, Short Rise Available 30-44

7033W | Women's Polyester Elastique Transit Trousers

Colors: N, B | Size charts - F *No 2, 26-30

N NAVY **B** BLACK



TACT SQUAD

EMS/EMT UTILITY TROUSERS

- › Fabric: 65% Polyester / 35% Cotton, 7.5 oz. per sq. yd. / 12.5 oz per linear yd.; Twill weave
- › At-Ease™ slide adjustment waistband
- › Heavy-duty YKK® zipper
- › Double hook and eye closure
- › Reinforced knees and seat for durability
- › Bar tacks at all points of stress
- › 6 pocket design
- › Machine washable

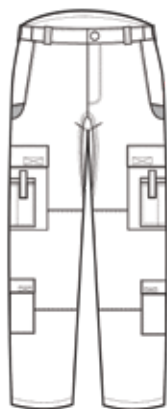
7011 | Men's EMS/EMT Utility Trousers

Colors: N, B | Size charts - E *No 62-66

7011W | Women's EMS/EMT Utility Trousers

Colors: N, B | Size charts - F *No 2, 26-30

N NAVY **B** BLACK



TACT SQUAD

LIGHTWEIGHT RIPSTOP EMS TROUSERS

- › Fabric: 65% Polyester / 35% Cotton, 6 oz per sq. yd. / 10 oz per linear yd.; lightweight Ripstop fabric
- › Tactguard™ fabric protector to resist water, oils, and other fluids
- › Triple-stitch side and seat seams adds strengthened durability
- › Double reinforced U-shaped pocket corner
- › Heavy-duty button waist closure
- › Longer rise in back allows easier bending or squatting
- › Heavy-duty dot snap and Velcro closure pocket straps
- › Gusseted crotch gives increased durability and ease of movement
- › Double reinforced knee panels with inside knee pad pocket
- › At-Ease™ slide adjustment waistband
- › Women's style features new low-rise design for better comfort
- › Heavy-duty YKK® zippers
- › Lower leg utility pockets on both right and left legs
- › Machine washable

7021 | Men's Lightweight Ripstop EMS Trousers

Colors: DN, BK | Size charts - E ***No 56-66**

7021W | Women's Lightweight Ripstop EMS Trousers

Colors: DN, BK | Size charts - F ***No 20-30**

DN

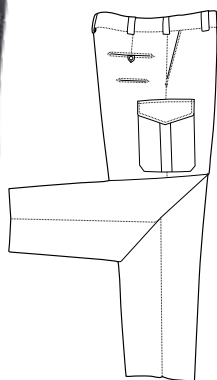
DARK
NAVY

BK

BLACK

800.858.6755





See Pg. 14
for matching shirt.

TACT SQUAD

STREET LEGAL TROUSERS

- › Fabric: 65% Polyester / 35% Cotton, 7.5 oz per sq. yd. / 12.5 oz. per linear yd.; Twill weave
- › Treated with Tactguard™ fabric protector to resist water, oils, and other fluids
- › At-Ease™ slide adjustment waistband
- › Supercreeze® treated in front and back for a crisp, clean look
- › 8 durable pocket design
- › 2 bellows-style cargo pockets
- › 2 extra deep pockets
- › 2 back pockets with button tabs
- › Back billy pockets
- › Snug-Tex waistband provides durability and helps shirts remain tucked
- › Heavy-duty YKK® zipper
- › Drop belt loops
- › Machine wash or dry clean

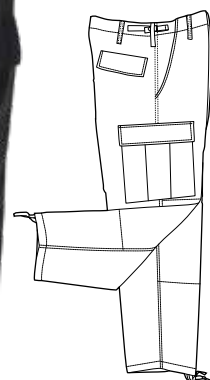
T7004 | Men's Street Legal Trousers

Colors: DN, BK | Size charts - E *No 62-66

TW7004 | Women's Street Legal Trousers

Colors: DN, BK | Size charts - F

DN DARK NAVY **BK** BLACK



See Pg. 15
for matching shirt.



TACT SQUAD

RIPSTOP BDU TROUSERS

- › Fabric: 65% Polyester / 35% Cotton, 6.5 oz per sq. yd. / 11 oz. per linear yd.; Ripstop fabric
- › Sewn to military specifications
- › 2 front slash pockets
- › 2 rear pockets with snag proof rectangular pocket flaps with hidden closures
- › 2 reinforced adjustable side tabs
- › Reinforced knees and seat for durability
- › Drawstring legs to tighten or shorten your trousers
- › Machine wash or dry clean

T7010 | Men's BDU Ripstop Trousers

Colors: N, BK, WD, BR | Size charts - H *Available in XS

N NAVY **B** BLACK **WD** WOODLAND **BR** BROWN



TACT SQUAD

LIGHTWEIGHT RIPSTOP TACTICAL TROUSERS

- › Fabric: 65% Polyester / 35% Cotton, 6.5 oz per sq. yd. / 10 oz. per linear yd.; lightweight Ripstop fabric
- › Tactguard™ Fabric Protector allows resistance to water, oil, and stains
- › At-Ease™ slide adjustment waistband guarantees your trousers will always fit
- › Gusseted crotch
- › Double reinforced knee panels
- › 2 cargo pockets with ergonomically designed flaps and internal box pleats
- › Accessible cell phone / pistol mag pocket on both sides
- › Heavy-duty YKK® zippers
- › Snap waist closure with French fly
- › Double reinforced pocket corners
- › Women's style features low-rise design
- › Back welt pockets with flaps
- › Separated belt loops to allow attachment of badge
- › Machine washable

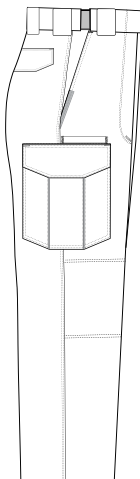
T7512 | Men's Lightweight Ripstop Tactical Trousers

Colors: DN, BK, KH, OD, BR | Size charts - E2 *Available 26-54

TW7512 | Women's Lightweight Ripstop Tactical Trousers

Colors: DN, BK, KH, OD, BR | Size charts - E2

DN	DARK NAVY	BK	BLACK	KH	KHAKI
OD	OD GREEN	BR	BROWN		



See Pg. 15
for matching shirt.

OUTERWEAR





MAX

TAR

CAP

CU.



TACT SQUAD

UNIFORM BLAZER

- › Fabric: 100% wrinkle-resistant textured woven Polyester
- › Traditional 2 button single breasted
- › Fully-lined with 2 inside pockets
- › Center vent for comfort
- › 3 button cuff
- › Dry clean only
- › Burgundy and heather gray available in men's only

8000 | Men's Uniform Blazer

Colors: N, B, H, BG | Size Charts - K

8000W | Women's Uniform Blazer

Colors: N, B | Size Charts - L *No Size 24

N NAVY **B** BLACK **H** HEATHER GRAY **BG** BURGUNDY





TACT SQUAD

JOB SHIRT 2.0

**NEW
DESIGN**

- › Fabric: 80% Cotton / 20% Polyester
- › Fleece inner lining
- › Lower placket mic tab
- › Dual shoulder mic tabs
- › Concealable D-ring
- › Dual hidden chest pockets
- › Patch friendly pen pockets
- › Large elbow canvas patches
- › Dual lower hand pockets
- › Matching collar
- › Machine washable

2005 | Men's Job Shirt 2.0

Colors: N | Size Charts - N *No XXS, 6X

N

NAVY



TACT SQUAD

COMMANDO V-NECK

- › Fabric: 100% Acrylic Yarn
- › Original Tact Squad V-neck commando sweater design
- › Velcro closure epaulets
- › Reinforced elbow patches for increased durability
- › Sewn on badge tab
- › Breathable design allows you to stay warm without overheating
- › Machine washable

2003 | Men's 100% Acrylic Yarn Commando V-Neck Sweater

Colors: N, B | Size Charts - N *No 6X

N NAVY **B** BLACK



TACT SQUAD

COMMANDO V-NECK

- › Fabric: 100% Wool
- › Original Tact Squad V-neck commando sweater design
- › Epaulets with metal button closures
- › Reinforced elbow patch for increased durability
- › Optional separate badge tab included
- › Dry clean only

2004 | Men's 100% Wool Commando V-Neck Sweater

Colors: N, B, G | Size Charts - N *No 5X, 6X

N NAVY **B** BLACK **G** GREEN



TACT SQUAD

FLANNEL-LINED WINDBREAKER

- › Fabric: 100% Nylon shell with fleece inner lining, water resistant
- › Reinforced hand-warmer pockets
- › Color matching snap closures
- › Drawstring waist and shirred elastic cuff
- › Select Made-To-Order options available
- › Machine washable
- › Custom solid or reflective printing available

1111 | Men's Flannel Lined Windbreaker

Colors: N, B, BR, Y, G | Size Charts - N

N NAVY **B** BLACK **BR** BROWN **Y** YELLOW **G** GREEN



TACT SQUAD

CLASSIC SECURITY WINDBREAKER

- › Fabric: 100% Nylon shell with fleece inner lining, water resistant
- › Reinforced hand-warmer pockets
- › Color matching snap closures
- › Drawstring waist and shirred elastic cuff
- › Machine washable
- › SECURITY lettering on left chest and across back
- › Machine wash and dry clean



1112 | Men's Classic Security Windbreaker

Colors: B, N, Y | Size Charts - N

B BLACK /WHITE LETTERS **Y** YELLOW /BLACK LETTERS **N** NAVY /WHITE LETTERS



TACT SQUAD

NYLON SHELL RAID JACKET

- › Fabric: 100% Nylon outershell with flannel inner lining
- › Reflective stripe on chest, back, sleeve, and cuff
- › Metal button closure
- › Drawstring waist and semi-elastic cuffs
- › Slash hand warmer pockets
- › Select Made-To-Order options available
- › Machine washable
- › Custom printing available
- › Optional NYPD style raid jacket has NYPD badge and POLICE across front and NYPD POLICE across back



F1088 | Men's Nylon Shell Raid Jacket

Colors: DN | Size Charts - N *No 6X

F1088NY | Men's NYPD Nylon Shell Raid Jacket

Colors: DN | Size Charts - N *No 6X

DN DARK NAVY



TACT SQUAD

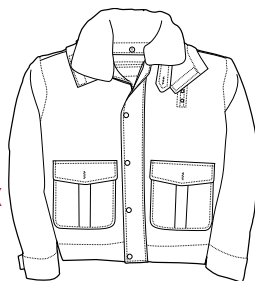
DUTY JACKET



- › Fabric: 100% Polyester with water resistant coating
- › Removable polyester liner
- › Zippered side vents with snap closures
- › Removable hood and collar
- › Storm front flap
- › Badge tab
- › Machine washable

1009 | Men's Duty Jacket *Available in S-8X

Colors: N, B | Size Charts - N



N NAVY **B** BLACK

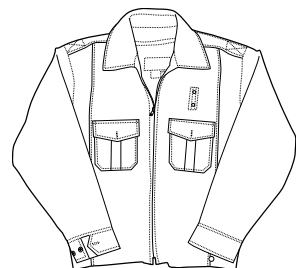
TACT SQUAD

CLASSIC DUTY JACKET

- › Fabric: 100% Nylon shell
- › Removable quilted liner
- › Badge tab with metal eyelets
- › 2 pleated flap/patch front pockets with metal buttons
- › 10" zippered side vents
- › Heavy-duty YKK® zipper
- › Machine washable

9001 | Men's Nylon Classic Duty Jacket

Colors: N, B, BR | Size Charts - N *Available in XS



N NAVY **B** BLACK **BR** BROWN



TACT SQUAD

POLICE BOMBER JACKET

- › Fabric: 100% Nylon, water resistant
- › Quilted polyfill insulation
- › Full cut sleeves for better mobility
- › Elastic cuffs and waist
- › Pleated patch pockets with hand-warmer storage
- › Badge tab
- › Plush pile collar
- › Machine washable

1000 | Men's Police Bomber Jacket

Colors: N, B | Size Charts - N

N NAVY **B** BLACK



TACT SQUAD

BOMBER JACKET

- › Fabric: 100% Nylon, water resistant
- › Quilted polyfill insulation
- › 2 slash welt pockets
- › Plush pile collar
- › Badge tab with metal eyelets
- › Machine washable

1001 | Men's Bomber Jacket

Colors: N, B | Size Charts - N*Available in XS

N NAVY **B** BLACK





TACT SQUAD

PATROL BOMBER JACKET

- › Fabric: 100% Nylon outer shell
- › Waterproof outer shell is breathable for added comfort
- › Badge tab with metal eyelets
- › ThermoGuard™ insulation to keep in warmth
- › Waist-length jacket
- › Zip-out removable liner
- › Knit cuffs and waistband
- › Side zippers for easy equipment access
- › Heavy-duty YKK® zipper
- › Machine washable



F1033 | Men's Patrol Bomber Jacket

Colors: DN | Size Charts - M *No 5X, 6X

DN DARK NAVY

TACT SQUAD

TACT GEN JACKET

- › Fabric: 100% Nylon with water resistant coating
- › Treated with Aquatact™ for increased water resistance
- › 3 inside pockets
- › ThermoGuard™ insulated liner
- › Optional removable fur collar
- › Badge tab
- › Machine washable



F1003 | Men's Tact Gen Jacket

Colors: DN, BK, GN | Size Charts - M *Available in XS

DN DARK NAVY **BK** BLACK **GN** GREEN



TACT SQUAD

SECURITY PARKA W REMOVABLE HOOD

- › Fabric: 100% Nylon shell
- › Zippered side vents
- › Inside storm flap
- › Heavy-duty YKK® zipper
- › Plush pile collar
- › Zip-off quilted hood with drawstring
- › Polyfill quilted liner
- › Machine washable



1011 | Men's Security Parka w/ Removable Hood

Colors: N, B, BR | Size Charts - N

N NAVY **B** BLACK **BR** BROWN



TACT SQUAD

THREE SEASON JACKET

- › Fabric: 100% Nylon, water resistant
- › Treated with Aquatact™ fabric protection to prevent water penetration
- › Collar and torso lined with micro-fleece
- › Quilted raglan sleeves
- › Heavy-duty YKK® zipper extends to collar
- › 2 zippered slash pockets
- › Knit cuff and waistband
- › Machine wash and dry clean



1004 | Men's Three Seasons Jacket

Colors: N, B | Size Charts - N

N NAVY /GRAY LINER **B** BLACK /BLACK LINER



TACT SQUAD

PERFECT STORM DUTY JACKET

- › Fabric: 100% Nylon, water and windproof
- › Treated with Climatact™ for complete wind and water resistance
- › 2-way bellows fleece lined, hand-warming pockets
- › Inside storage pockets
- › Heavy-duty YKK® zipper
- › 3 fully concealable customizable identification panels: 2 in front and 1 in back
- › Optional Hi-Vis preprinted panels: SHERIFF, POLICE, SECURITY, and EMS available in sets of three
- › Storable hood for rainy or cold weather
- › Machine washable

F1006 | Men's Perfect Storm Duty Jacket

Colors: DN, BK, GN | Size Charts - M **Available in XS*

DN

DARK
NAVY

BK

BLACK

GN

GREEN

Hi-Vis Optional Panels

Hi-Vis Panels are offered in sets of three, two front and one back panel. If you desire to order panels for your coat, please use the following item codes:

PANEL POLICE	PANEL SECURITY
PANEL SHERIFF	PANEL EMS





TACT SQUAD

POLYESTER AIR-MESH SAFETY VEST

- › Fabric: 100% Polyester air-mesh
- › Optional SECURITY lettering on front and rear stripe
- › Velcro front closure
- › 1/2 in. reflective chest striping

DC65YW PLAIN | Polyester Air-Mesh Safety Vest

Colors: HI-Viz Yellow | Size Charts - ONE SIZE FITS ALL

DC65OR PLAIN | Polyester Air-Mesh Safety Vest

Colors: HI-Viz Orange | Size Charts - ONE SIZE FITS ALL

DC65YW SEC | Polyester Air-Mesh Safety Vest W/ Security Print

Colors: HI-Viz Yellow | Size Charts - ONE SIZE FITS ALL

DC65OR SEC | Polyester Air-Mesh Safety Vest W/ Security Print

Colors: HI-Viz Orange | Size Charts - ONE SIZE FITS ALL

Y HI-VIZ YELLOW **O** HI-VIZ ORANGE

TACT SQUAD

MULTIPOINT BREAKAWAY SAFETY VEST

- › Fabric: 100% Polyester solid knit
- › ANSI 107-2010 Class 2 Level 2, 3rd party certified
- › 2" reflective material
- › 1 lower outside pocket
- › 2 inside pockets
- › Available with or without SECURITY lettering on the front and back
- › Dual mic tabs on each shoulder

DC66 PLAIN | Multipoint Breakaway Safety Vest

Colors: HI-Viz Yellow | Size Charts - N ***No Small**

DC66 SEC | Multipoint Breakaway Safety Vest With Security Printing

Colors: HI-Viz Yellow | Size Charts - N ***No Small**

Y HI-VIZ YELLOW



TACT SQUAD

POLYURETHANE RAINCOAT

- › Fabric: polyurethane coated Nylon
- › Detachable drawstring hood
- › Storm flaps provide additional weather protection
- › Patch pockets with slash openings
- › Underarm vents and vented back for comfort
- › Take up snaps on sleeves all for secure fit
- › Badge tab
- › 48" length

6011 | Men's Polyurethane Coated Nylon

Colors: B, G | Size Charts - N *No 6X

B BLACK **G** CDCR GREEN



TACT SQUAD

PVC RAINCOAT

- › Fabric: PVC coated Polyester
- › Storm flaps provide additional weather protection
- › 2 exterior pockets
- › Underarm vents and vented back for comfort
- › Take up snap on sleeves allow for secure fit
- › Available with SECURITY lettering on back and left chest
- › 51 in. - 52 in. length

6011Y | Men's PVC Coated Polyester Raincoat

Colors: Y | Size Charts - N *No 6X

6011YS | Men's PVC Coated Polyester Raincoat W Security Print

Colors: YS | Size Charts - N *No 6X

6012B | Men's PVC Coated Polyester Raincoat

Colors: B | Size Charts - N *No 6X

6012 BS | Men's PVC Coated Polyester Raincoat W Security Print

Colors: BS | Size Charts - N *No 6X

Y YELLOW **YS** YELLOW /BLACK SECURITY
B BLACK **BS** BLACK /WHITE SECURITY



TACT SQUAD

REVERSIBLE WATERPROOF RAINCOAT

- › Fabric: 100% waterproof 2-ply Nylon
- › 52" raincoat designed for law enforcement
- › 2" wide 3M™ reflective tape around shoulders, chest and biceps on Hi-Viz side
- › Zippered front with Velcro closures over-fly
- › Raglan sleeves
- › Badge tab
- › Machine washable

6011BY | Men's Reversible Water Proof Raincoat

Colors: BY | Size Charts - N *No 6X

6011BO | Men's Reversible Water Proof Raincoat

Colors: BO | Size Charts - N *No 6X

BY HI-VIZ YELLOW /BLACK INSIDE **BO** HI-VIZ ORANGE /BLACK INSIDE

FOOTWEAR







TACT SQUAD

HI-GLOSS UNIFORM OXFORD SHOES

- › Hi-Gloss design means you'll never have to polish your shoes
- › Protective lining helps fight against mildew and odor while keeping you nicely ventilated
- › Dense outsole helps provide extra comfort and shock absorption
- › Comfortable insole helps you stay on your feet longer
- › Non-metallic design

S200 | Hi-Gloss Uniform Oxford

Colors: Black | Size Chart: Shoes

B BLACK



TACT SQUAD

STANDARD UNIFORM OXFORD SHOES

- › Non-gloss and smooth outer design for a professional appearance
- › Protective lining helps fight against mildew and odor while keeping you nicely ventilated
- › Dense outsole helps provide extra comfort and shock absorption
- › Comfortable insole helps you stay on your feet longer
- › Water resistant

S210 | Standard Uniform Oxford Shoes

Colors: Black | Size Chart: Shoes

B BLACK



TACT SQUAD

LEATHER UNIFORM OXFORD SHOES

- › Non-gloss and smooth leather design for a professional appearance
- › Protective lining helps fight against mildew and odor while keeping you nicely ventilated
- › Dense outsole helps provide extra comfort and shock absorption
- › Comfortable insole helps you stay on your feet longer
- › Made with real leather

S220 | Leather Uniform Oxford Shoes

Colors: Black | Size Chart: Shoes

B BLACK

SENTRY BOOTS

LONG-LASTING
DURABILITY.



TACT SQUAD

8" SENTRY SIDE-ZIP BOOTS

- › Leather / Nylon upper
- › Heavy-duty YKK® side zipper with hook and loop closures
- › Tact-Step™ cushioned removable insole
- › Slip and skid resistant outsole
- › Padded collar for added comfort

S310 | 8" Sentry Side-Zip Boots

Colors: Black | Size Chart: Shoes

B

BLACK



TACT SQUAD

6" SENTRY SIDE-ZIP BOOTS

- › Polishable Leather / Nylon upper
- › Heavy-duty YKK® side zipper with hook and loop closures
- › Tact-Step™ cushioned removable insole
- › Slip, skid and mark resistant outsole
- › Padded collar for added comfort

S300 | 6" Sentry Side-Zip Boots

Colors: Black | Size Chart: Shoes

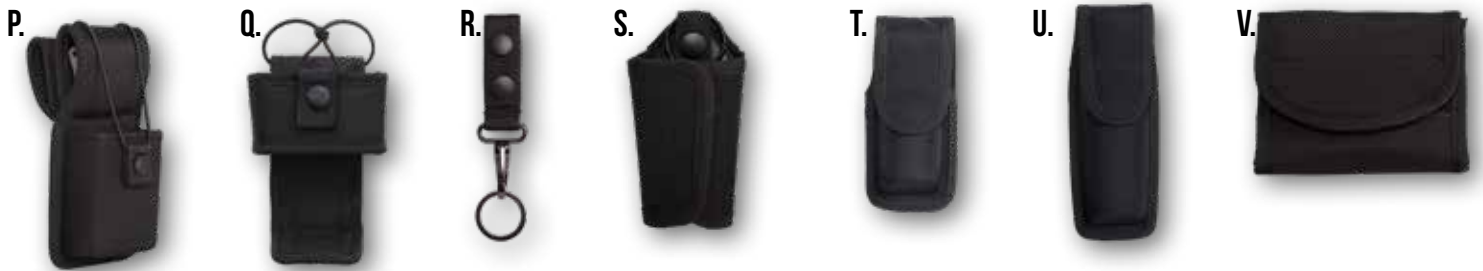
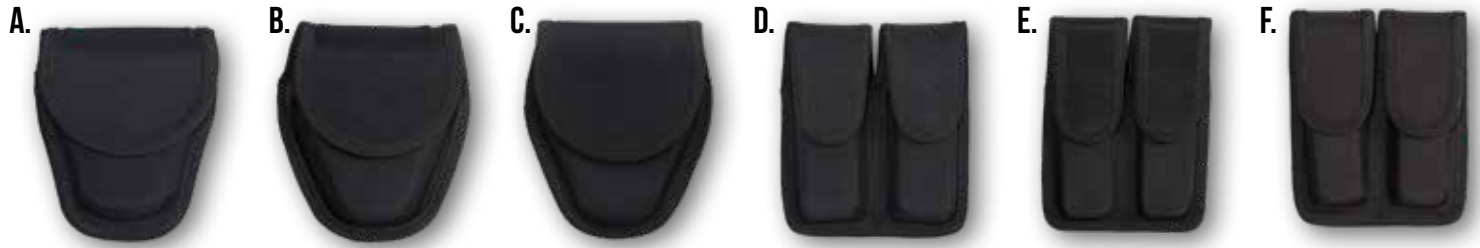
B

BLACK

DUTY GEAR







HANDCUFF CASES

A. Single Handcuff Case	TG003
B. Double Handcuff Case	TG002
C. Single Hinged Handcuff Case	TG023

MAGAZINE POUCHES

D. 10mm / .45 Stacked (1)	TG004-1
E. 9mm / .40 Staggered (2)	TG004-2
F. 10mm / .40 Staggered (3)	TG004-3

BATON HOLDERS

G. PR24 Holder	TG016
H. 26" Expandable Holder	TG009
I. 21" Expandable Holder	TG010

FLASHLIGHT HOLDERS

J. Stinger Mini Flashlight	TG006
K. AA Mini Flashlight	TG008
L. D-Cell Flashlight	TG015
M. Stinger Open Top	TG024

BELT KEEPERS (4 PACK)

N. Belt Keepers	TG017
-----------------	-------

RADIO HOLDERS

O. Standard Universal Holder	TG019
P. Swivel Universal Holder	TG021
Q. Adjustable Holder with Foot	TG025

KEY RING HOLDERS

R. Standard Key Ring Holder	TG022
S. Silent Key Ring	TG014

PEPPER SPRAY HOLDERS

T. MK-3 Small Pepper Spray	TG005-III
U. MK-4 Large Pepper Spray	TG005-IV

POUCHES

V. Latex Glove Pouch	TG007
W. Alarm Pouch	TG012
X. Pager / Glove Pouch	TG013
Y. Double Speed Loader	TG018

HOLSTERS

Z. MK-9 Leg Holster	TG020
---------------------	-------

DUTY BELTS

AA. Molded Nylon Duty Belt (4)	TG001
AB. Liner Belt (5)	TG01
AC. Tri-release Replacement Buckle	TGBUCKLE

- (1)** Colt GVT, H&K P7-M8, Sig Sauer P220-P225, Ruger P90, S&W 1006, 3904, 3906, 4506
- (2)** BERETTA, 92-F-96F, Glock 17-19-22-23, Sig Sauer P226, P228, P229, S&W 4006, 5406, SW40F
- (3)** Glock 20-21, H&K USP
- (4)** 100% Durable ballistic Nylon weave with Sturdy tri-release buckle. Fully loop-lined to create keeperless system when used with liner belt. Sizes: S (28"-34"), M (34"-40"), L (40"-46"), XL (46"-52"), 2XL (52"-58"), 3XL (58"-64")
- (5)** 100% Durable ballistic Nylon weave with Velcro closure. Fully hook-lined to create keeperless system when used with liner belt. Sizes: S (28"-34"), M (34"-40"), L (40"-46"), XL (46"-52"), 2XL (52"-58"), 3XL (58"-64")



BAGS







TACT SQUAD

DELUX PATROL BAG

- › Water and abrasion resistant
- › 5 cleated footpads create a durable base and reduce fraying if bag is dragged
- › Sturdy tri-release shoulder strap buckles are secured with box and cross stitching for extra durability
- › Rigid inserts and extra padding on sides and bottom provide exceptional protection of your gear
- › Rigid main compartment divider included
- › multiple pockets and holders on sides and lid
- › Premium nylon lining makes it easy to clean
- › Top unzips for easy customization -- add your name or company logo

TG320 | Delux Patrol Bag

Colors: Black

B BLACK





TACT SQUAD

LOCKER STOCKER

- › Measures 11" W x 53"
- › Six pen pockets
- › One durable mirror
- › One cell phone pocket
- › One miscellaneous pocket for notepads, office supplies, etc.
- › One heavy-duty clip for holding keys
- › One radio holder
- › One stinger flashlight holder
- › Two magazine pouches
- › One heavy-duty dot-snap handcuff holder
- › One large flashlight ring holder
- › One collapsible baton holder
- › Molle system behind flashlight ring for convenience
- › One large ticket book holder with Velcro closure
- › One large well pocket at bottom to hold duty boots and shoes
- › Two heavy-duty clips at top to connect to locker

TG360 | Locker Stocker

Colors: Black

B BLACK





TACT SQUAD

CAR SEAT ORGANIZER

- › Measures 22" W x 17" H x 7.5" D
- › PVC coated backing for stiffness and to help prevent wearing
- › Adjustable shoulder strap allows bag to be secured to passenger car seat
- › Zippered center compartment with dividers
- › Large top opening with accordion dividers
- › Front equipment pockets
- › Pen and notepad pockets
- › Large side pockets
- › Clear ID pocket on top center

TG310 | Car Seat Organizer

Colors: Black

B BLACK



TACT SQUAD

WAR BAG

- › Fabric: 1680 Denier Nylon construction
- › Large double zippered main compartment
- › Collapsible full-size helmet compartment
- › 3 front organizer pockets, zipper pocket, and side pocket
- › Flashlight and mag pockets
- › Adjustable shoulder strap that detaches
- › 3 Nylon web Velcro straps

TG300 | War Bag

Colors: Black

B BLACK





TACT SQUAD

GEAR BAG

- › Measures 18" W x 10.5" H x 10" D
- › 1,890 cubic inches of storage space
- › Reinforced bottom
- › Detachable shoulder strap
- › Side pockets with hook and loop closures
- › Sturdy carry handles
- › MOLLE attachment system on front

TG330 | Gear Bag

Colors: Black

B BLACK



TACT SQUAD

GARMENT BAG

- › 2.5" top hanger slot
- › 2 carry handles
- › Visible business card display window
- › Mesh lined zipper storage compartment
- › Lower shoe compartment

TG340 | Gear Bag

Colors: Black

B BLACK



ACCESSORIES







TACT SQUAD

NEOPRENE UNIFORM GLOVES

- › Fabric: Water resistant Neoprene with synthetic leather palm
- › Adjustable Velcro wrist closure
- › Non-slip Velcro closure on wrist

TG100 | Neoprene Uniform Gloves

Colors: B | Sizes S, M, L, X, 2XL

B BLACK



TACT SQUAD

COWHIDE LEATHER GLOVES

- › Fabric: 100% cowhide leather
- › Elasticized cuff
- › Quality stitch construction

TG120 | Cowhide Leather Gloves

Colors: Black | Sizes S, M, L, X, 2XL

B BLACK



TACT SQUAD

NEOPRENE GLOVES W/ KEVLAR

- › Fabric: Water resistant Neoprene with synthetic leather palm
- › Lined with Kevlar® for extra protection against cuts and flash flames
- › Adjustable Velcro wrist closure
- › Non-slip synthetic leather palms

TG110 | Neoprene Gloves with Kevlar

Colors: B | Sizes S, M, L, X, 2XL

B BLACK



TACT SQUAD

MULTIPURPOS DUTY GLOVES

- › Fabric: Lightweight Lycra / Nylon blend
- › Versatile glove is ideal for most duty uses
- › Non-slip palm and fingertip patches
- › Hook and loop wrist closure

TG130 | Multipurpose Duty Gloves

Colors: Black | Sizes S, M, L, X, 2XL

B BLACK



TACT SQUAD

POLYESTER CLIP-ON TIES

- › Fabric: 100% textured Polyester
- › 3 in. wide
- › Button-hole on small end

TIE16 | 16in Polyester Clip-On Tie

Colors: DN, B, BR | Sizes S, M, L, X, 2XL

TIE18 | 18in Polyester Clip-On Tie

Colors: DN, B, BR | Sizes S, M, L, X, 2XL

TIE20 | 20in Polyester Clip-On Tie

Colors: DN, B, BR | Sizes S, M, L, X, 2XL

TIE22 | 22in Polyester Clip-On Tie

Colors: DN, B, BR | Sizes S, M, L, X, 2XL

DN

DARK
NAVY

B

BLACK

BR

BROWN



TACT SQUAD

POLYESTER CROSS OVER TIE

- › Fabric: 100% textured Polyester
- › 3 in. wide
- › Button-hole on small end

TIECO | Women's Textured Polyester Cross Over Tie

Colors: DN, B, BR | One Size Fits All

DN

DARK
NAVY

B

BLACK

BR

BROWN





LAPD
STYLE

TACT SQUAD
ROUND DUTY CAP

- › Fabric: 100% Wool
- › Full fabric top with open cane band; basket weave design
- › Hi-Gloss visor
- › Visor strap is 1/2 in.
- › Straps offered in metallic gold, silver, or hi-gloss shiny black
- › P buttons in silver finish
- › 2 horizontal badge eyelets, 1 1/2 in. apart
- › Inside identification pocket

C106 | Round Duty Cap

Colors: DN | Sizes S, M, L, X, 2XL

DN DARK NAVY



NYPD
STYLE

TACT SQUAD
SHORT BILL 8 POINT DUTY CAP

- › Fabric: 100% Polyester, textured
- › NY gold metal side buttons
- › 1 hole badge eyelet
- › Side vent
- › Inside identification pocket

C102 | Short Bill 8-Point Duty Cap

Colors: DN | Sizes S, M, L, X, 2XL

DN DARK NAVY



TACT SQUAD

WATCH CAP

- › Provides lightweight warmth
- › Available Plain (no embroidery) or with SECURITY embroidery in choice of white or gold lettering.

B BLACK **DN** DARK NAVY

SKU	Description	Colors
C105B	Watch Cap	Black
C105N	Watch Cap	Navy
C105NSW	Watch Cap w SECURITY	Navy / White Lettering
C105NSG	Watch Cap w SECURITY	Navy / Gold Lettering
C105BSW	Watch Cap w SECURITY	Black / White Lettering
C105BSG	Watch Cap w SECURITY	Black / Gold Lettering



TACT SQUAD

TG850 LED FLASHLIGHT

- › Max output 850 lumen
- › Water resistant
- › Impact resistant 1.5m
- › Weight 2.73 ounces (77.5 grams) with out batteries
- › Uses one (1) 18650 Li-Ion or two (2) CR123A batteries
- › Digitally regulated output - maintains constant brightness
- › Slip-resistant body design
- › Made of durable aircraft grade aluminum
- › Premium hard-anodized anti-abrasive finish
- › Toughened ultra-clear glass lens with anti-reflective coating
- › Tactical lanyard with Two replacement O-rings

TG850 | LED Flashlight



TACT SQUAD

LED TRAFFIC BATON

- › Ideal for parking, pedestrian and traffic control
- › Durable high-impact plastic housing with textured grip
- › Modes: flashing red, steady red, flashlight
- › 3 super-bright white LEDs in tip create a convenient flashlight
- › 21.5" length with 13" light shaft
- › Uses 3 C-cell batteries (not included)

L3150 | LED Traffic Baton w Flashlight



THANK YOU

THANK YOU TO ALL OF OUR VENDORS, DISTRIBUTORS, CUSTOMERS, FANS AND EVERYBODY ELSE WHO CONTINUES TO MAKE OUR BUSINESS A SUCCESS. THANK YOU FOR YOUR PATRONAGE. IT IS OUR HOPE THAT WE CAN CONTINUE TO SERVE OUR DEDICATED CUSTOMERS IN THE YEARS TO COME.



SHIRTS

08	100% POLYESTER UNIFORM SHIRT
09	TWO-TONE 100% POLYESTER SHIRT W/ HIDDEN ZIPPER
10	POLYESTER / COTTON UNIFORM SHIRT
11	TWO-TONE POLY / COTTON UNIFORM SHIRT W/ HIDDEN ZIPPER
12	POLY/COTTON NYPD UNIFORM SHIRT (LONG SLEEVE)
12	POLY/COTTON NYPD UNIFORM SHIRT (SHORT SLEEVE)
13	DELUXE TRANSIT SHIRT
13	OXFORD DRESS SHIRT
14	POLY/WOOL DUTY SHIRT
14	STREET LEGAL SHIRT
15	RIPSTOP BDU SHIRT
15	LIGHTWEIGHT TACTICAL RIPSTOP SHIRT
16	TACT PRO 2.0 POLO SHIRT
17	SECURITY POLO SHIRT
17	STANDARD POLO SHIRT

TROUSERS

20	POLYESTER UNIFORM TROUSERS
20	ELASTIQUE UNIFORM TROUSERS
21	POLYESTER UNIFORM TROUSERS W/ CARGO POCKETS
21	NEW YORK STYLE UNIFORM TROUSERS
22	POLY/COTTON UNIFORM TROUSERS
22	NEW JERSEY TROUSERS W CARGO POCKETS
23	POLY/WOOL ADMIN TROUSERS
23	POLY/COTTON NYPD DUTY TROUSERS
24	POLYESTER ELASTIQUE TRANSIT TROUSERS
24	EMS/EMT UTILITY TROUSERS
25	LIGHTWEIGHT RIPSTOP EMS TROUSERS
26	STREET LEGAL TROUSERS
27	LIGHTWEIGHT RIPSTOP TACTICAL TROUSERS

OUTERWEAR

30	UNIFORM BLAZER
31	JOB SHIRT 2.0
32	COMMANDO V-NECK
32	COMMANDO V-NECK
33	FLANNEL-LINED WINDBREAKER
33	CLASSIC SECURITY WINDBREAKER
33	NYLON SHELL RAID JACKET
34	DUTY JACKET
34	CLASSIC DUTY JACKET
35	POLICE BOMBER JACKET
35	BOMBER JACKET
36	PATROL BOMBER JACKET
36	TACT GEN JACKET
37	SECURITY PARKA W REMOVABLE HOOD
37	THREE SEASON JACKET
40	POLYURETHANE RAINCOAT
40	PVC RAINCOAT
41	REVERSIBLE WATERPROOF RAINCOAT

FOOTWEAR

44	HI-GLOSS UNIFORM OXFORD SHOES
44	LEATHER UNIFORM OXFORD SHOES
45	8" SENTRY SIDE-ZIP BOOTS
45	6" SENTRY SIDE-ZIP BOOTS

DUTY GEAR

49	HANDCUFF CASES
49	MAGAZINE POUCHES
49	BATON HOLDERS
49	FLASHLIGHT HOLDERS
49	BELT KEEPERS (4 PACK)
49	RADIO HOLDERS
49	KEY RING HOLDERS
49	PEPPER SPRAY HOLDERS
49	POUCHES
49	HOLSTERS
49	DUTY BELTS

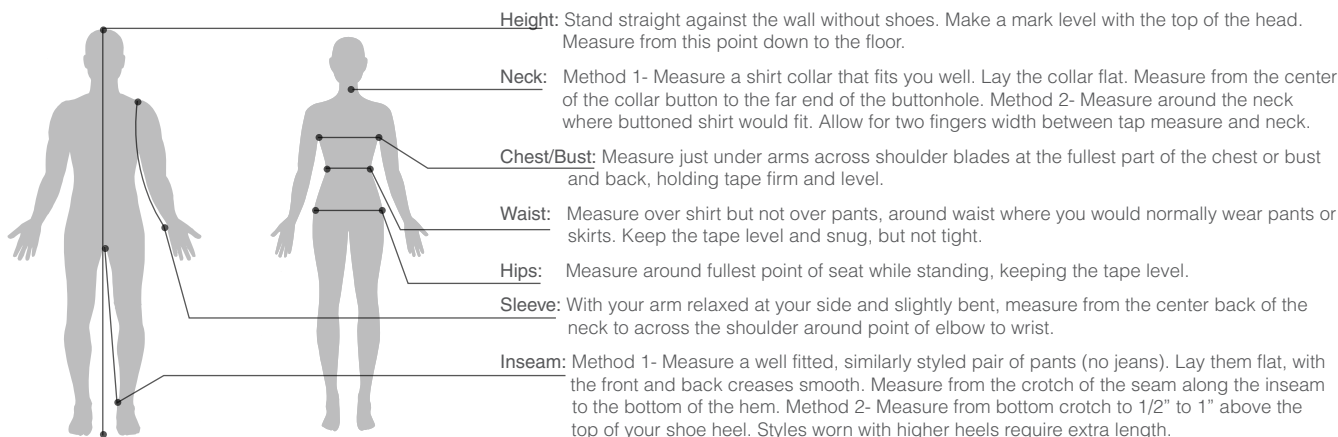
BAGS

- 52 DELUX PATROL BAG
- 53 LOCKER STOCKER
- 54 CAR SEAT ORGANIZER
- 54 WAR BAG
- 55 GEAR BAG

ACCESSORIES

- 55 GARMENT BAG
- 58 COWHIDE LEATHER GLOVES
- 58 NEOPRENE GLOVES W/ KEVLAR
- 59 POLYESTER CLIP-ON TIES
- 59 POLYESTER CROSS OVER TIE
- 60 ROUND DUTY CAP
- 60 SHORT BILL 8 POINT DUTY CAP
- 60 WATCH CAP
- 61 LED TRAFFIC BATON
- 61 TG850 LED FLASHLIGHT





To ensure you receive the best possible fit, write down your measurements using the instructions above. Determine which size category you fall into by comparing your measurements with those listed in the charts below. If your measurements fall between two sizes, it is recommended you take the larger size.

Height equivalents: shorts up to 5'7", regulars are 5'8"-6'0", longs are 6'1" and taller.

Men's Conversion Chart

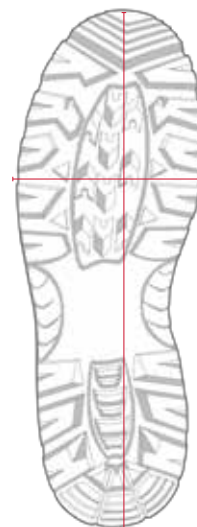
	XS		S		M		L		XL		2XL		3XL	
NECK	13	13.5	14	14.5	15	15.5	16	16.5	17	17.5	18	18.5	19	19.5
CHEST	32	34	36	38	40	42	44	46	48	50	52	54	56	58
SLEEVE	31	32	32.5	33	33.5	34	34.5	35	35.5	36	36.5	37	37.5	38
WAIST	24	26	28	30	32	34	36	38	40	42	44	46	48	50

Women's Conversion Chart

	XS		S		M		L		XL		2XL	
NECK	2	4	6	8	10	12	14	16	18	20	22	24
WAIST	24	25	26	27	28	29	31	33	35	37	39	41
HIP	33.25	34.25	35.25	36.25	37.25	39.25	41.25	43.25	45.25	47.25	49.25	51.25
THIGH	18.75	19.25	19.75	20.25	21.25	22.25	22.75	23.75	24.75	25.75	26.75	27.75
BUST	31	32	33	34	35	36	38	40	42	44	46	48
SLEEVE	28	28.5	29	29.5	30	30.5	31	31.5	32	32.5	33	33.5

SHOE AND BOOT SIZES

USA		UK		EURO		SHOES		BOOTS	
MEN'S	WOMEN'S	MEN'S	WOMEN'S	MEN'S	WOMEN'S	REG	WIDE	REG	WIDE
3	4.5	2.5	1	36	35	●			
4	5.5	3.5	2	37	25-36	●		●	
5	6.5	4.5	3	38	37	●		●	
5.5	7	5	3.5	38-39	37-38	●		●	
6	7.5	5.5	4	39	38	●		●	
6.5	8	6	4.5	39	38-39	●		●	
7	8.5	6.5	5	40	39	●	●	●	●
7.5	9	7	5.5	40-41	39-40	●	●	●	●
8	9.5	7.5	6	41	40	●	●	●	●
8.5	10	8	6.5	41-42	40-41	●	●	●	●
9	10.5	8.5	7	42	41	●	●	●	●
9.5	11	9	7.5	42-43	41-42	●	●	●	●
10	11.5	9.5	8	43	42	●	●	●	●
10.5	12	10	8.5	43-44	42-43	●	●	●	●
11	12.5	10.5	9	44	43	●	●	●	●
11.5	13	11	9.5	44-45	43-44	●	●	●	●
12	13.5	11.5	10	45	44	●	●	●	●
13	14.5	12.5	11	46	45	●	●	●	●
14	15.5	13.5	12	47	46	●	●	●	
15	16.5	14.5	13	48	47	●	●		



Determining your shoe size

Use a ruler or tape measurer to measure your foot (from the heel to the tip of your longest toe).

Choose a table from the left (U.S. to find your U.S. size, U.K. to find your U.K. size, Euro to find your European size).

Find the closest measurement, in inches, that is equal to or greater than the length of your foot. For example, a man whose foot measures 11-1/4 inches is a U.S. 12, a U.K. 12, or a European 47

*Tact Squad shoes and boots are available in several sizes, but not in all wide sizes. Please review the above chart to determine which footwear best suites your build. Bullets indicate that we carry specified size.

A Men's Long Sleeve Shirts

NECK	14	14.5	15	15.5	16	16.5	17	17.5	18	18.5	19	20	22
32	●	●	●	●	●	●	●	●					
33	●	●	●	●	●	●	●	●	●	●	●		
34	●	●	●	●	●	●	●	●	●	●	●	●	●
35		●	●	●	●	●	●	●	●	●	●	●	●
36				●	●	●	●	●	●	●	●	●	●
37					●	●	●	●	●	●	●	●	●
38						●	●	●	●	●	●	●	●

A2 Men's Long Sleeve Shirts - Alpha sizing

	XXS	XS	S	M	L	XL	2XL	3XL	4XL	5XL	6XL
	12-12.5	13-13.5	14-14.5	15-15.5	16-16.5	17-17.5	18-18.5	19-20	21	22	23
30/31	●	●	●	●	●	●					
32/33	●	●	●	●	●	●	●	●			
34/35			●	●	●	●	●	●	●	●	●
36/37				●	●	●	●	●	●	●	●

B Men's Short Sleeve Shirts

14	14.5	15	15.5	16	16.5	17	17.5	18	18.5	19	20	21	22
●	●	●	●	●	●	●	●	●	●	●	●	●	●

B2 Men's Short Sleeve Shirts - Alpha sizing

XXS	XS	S	M	L	XL	2XL	3XL	4XL	5XL	6XL
12-12.5	13-13.5	14-14.5	15-15.5	16-16.5	17-17.5	18-18.5	19-20	21	22	23
●	●	●	●	●	●	●	●	●	●	●

C Women's Long Sleeve Shirts

BUST	30/32	34	36	38	40	42/44	46/48
30	●	●					
31	●	●	●	●			
32			●	●	●		
33					●	●	●
34						●	●

C2 Women's Long Sleeve Shirts - Bust sizing

BUST	30	32	34	36	38	40	42	44	46	48
30/31	●	●	●	●	●					
32/33			●	●	●	●	●	●	●	●
34						●	●	●	●	●

C2 Women's Long Sleeve Shirts - Alpha sizing

	XS	S	M	L	XL	2X	3X	4X
30/31	●	●	●	●	●	●	●	●
32/33	●	●	●	●	●	●	●	●
34					●	●		

D Women's Short Sleeve Shirts

30	32	34	36	38	40	42	44	46	48
●	●	●	●	●	●	●	●	●	●

D2 Women's Short Sleeve Shirts - Alpha sizing

SIZE	S	M	L	XL	2XL
	30-32	34-36	38-40	42-44	46-48
	●	●	●	●	●

E Men's Trousers

28	29	30	31	32	33	34	35	36	37	38	40
●	●	●	●	●	●	●	●	●	●	●	●
42	44	46	48	50	52	54	56	58	60	64	66
●	●	●	●	●	●	●	●	●	●	●	●

E2 Tactical Pants *UH - Unhemmed

SIZE	28	30	32	34	36	38	40	42	44	46	48	50	52	54
30	●	●	●	●	●	●	●	●	●					
32	●	●	●	●	●	●	●	●	●					
34	●	●	●	●	●	●	●	●	●					
UH*										●	●	●	●	●

E3 Men's Trousers - Alpha sizing

XS	S	M	L	XL	2X	3X	4X	5X	6X
●	●	●	●	●	●	●	●	●	●

F Women's Trousers

2	4	6	8	10	12	14	16	18	20	22	24	26	28	30
●	●	●	●	●	●	●	●	●	●	●	●	●	●	●

G BDU Shirts

	XS	S	M	L	XL	2XL	3XL	4XL	5XL
CHEST		39-41	43-45	47-49	51-53	55-57	58-60	62-64	66-68
SHORT SLEEVE		31-33	33-34	34-35	35-36				
REG SLEEVE		33-34	34-35	35-36	36-37	37-38	38-39	39-40	40-41
LNG SLEEVE		34-35	35-36	36-37	37-38	38-39	39-40	40-41	41-42

H BDU Trousers

		S	M	L	XL	2XL	3XL	4XL	5XL	6XL
SHORT	WAIST	27-31								
	INSEAM	30								
REG	WAIST	27-31	31-35	35-39	39-43	43-47	47-51	51-55	55-59	59-63
	INSEAM	32	32	32	32	32	32	32	32	32
LONG	WAIST		31-35	35-39	39-43	43-47	47-51	51-55	55-59	59-63
	INSEAM		35	35	35	35	35	35	35	35

I Motor Breeches

	28	29	30	31	32	33	34	35	36	37
25	●	●	●	●	●	●	●	●	●	●
27	●	●	●	●	●	●	●	●	●	●
29	●	●	●	●	●	●	●	●	●	●
	38	40	42	44	46	48	50	52	54	
25	●	●	●	●	●	●	●	●	●	
27	●	●	●	●	●	●	●	●	●	
29	●	●	●	●	●	●	●	●	●	

J Oxford Shirts

	S	M	L	XL	2XL	3XL	4XL	5XL
NECK	14-14.5	15-15.5	16-16.5	17-17.5	18-18.5	19-20	21	22
SHORT	●	●						
REG	●	●	●	●	●	●	●	●
LONG			●	●	●	●	●	●
XLONG			●	●	●	●	●	●

K Men's Blazers, Dress Coats, Jumpsuits

	34	36	38	40	42	44	46	48	50	52	54	56	58	60
SH	●	●	●	●	●	●	●	●	●	●	●	●	●	●
RG	●	●	●	●	●	●	●	●	●	●	●	●	●	●
LNG	●	●	●	●	●	●	●	●	●	●	●	●	●	●

L Women's Blazers, Dress Coats

SIZE	2	4	6	8	10	12	14	16	18	20	22	24	26	28
BUST	37.5	38.5	39.5	40.5	41.5	43	44.5	46	50	52	54	56	58	60
BACK	REG	28.5	28.75	29	29.25	29.5	29.75	30	30.25	30.75	31	31.25	31.5	31.75
	TALL						31.75	32	32.25	32.75	33	33.25		
SLEEVE	REG	22	22.25	22.5	22.75	23	23.25	23.5	23.75	24.25	24.5	24.75	25	25.25
	TALL						24.75	25	25.25	25.75	26	26.25		

M Jackets, Outerwear

	S	M	L	XL	2XL	3XL	4XL	5XL	6XL
	34-36	38-40	42-44	46-48	50-52	54-56	58-60	62-64	66-68
SHORT	●	●	●						
REGULAR	●	●	●	●	●	●	●	●	●
LONG	●	●	●	●	●	●	●	●	●

N Jackets, Vests, Polo Shirts, Sweaters & Raincoats

S	M	L	XL	2XL	3XL	4XL	5XL	6XL
34-36	38-40	42-44	46-48	50-52	54-56	58-60	62-64	66
●	●	●	●	●	●	●	●	●



TACT SQUAD

 /TACTSQUAD/

 /OFFICIALTACTSQUAD/

800.858.6755

WWW.TACTSQUAD.COM

250 N. BENJAMIN DR., CORONA, CA 92879

AMWEAR USA

Tact Squad is part of the Amwear USA family of brands. For more quality law enforcement uniforms check out our United Uniform Manufacturers 2018 Product guide.

