

  
**UNITED UNIFORM**  
MANUFACTURERS



Professional Quality. Amazing Value.

**'TACT' SQUAD**



**Navy Uniform Program**  
In Stock & Ready to Ship

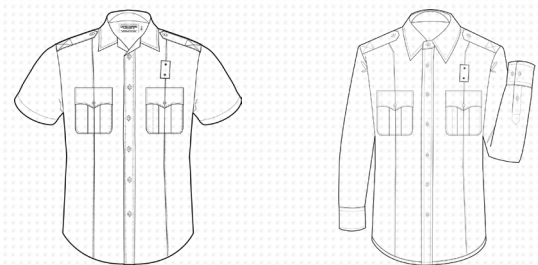
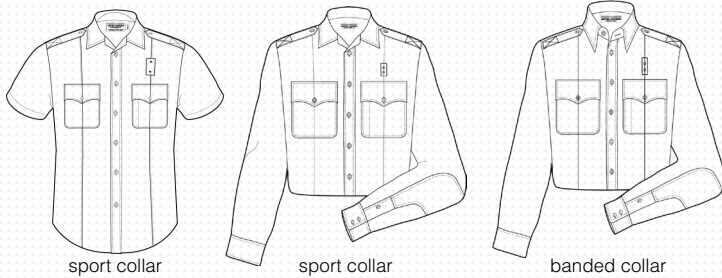


OUR PROFLEX™ SHIRTS ARE LIGHTWEIGHT AND ARE ENGINEERED TO GIVE YOU UP TO 15% STRETCH AND ARE FINISHED WITH DRYTEX™ TECHNOLOGY TO ASSURE THAT YOU STAY CLIMATE CONTROLLED IN ANY ENVIRONMENT. THESE SHIRTS ARE SPECIAL TAILORED TO PROVIDE YOU WITH MOISTURE CONTROL, WRINKLE PROTECTION, STAIN RELEASE PROPERTIES AND UPF 40 PROTECTION.



### PROFLEX™ SHORT/LONG\* SLEEVE CALIFORNIA SHIRT

### PROFLEX™ SHORT/LONG SLEEVE NATIONAL SHIRT



#### Shared Features:

- Fabric: 74% Polyester / 24% Wool / 2% Lycra, 12.5 oz. per linear yd.; Serge weave with 15% stretch
- Yolk lined with durable satin lining
- Sport collar with permanent collar stays
- Double-Needle construction throughout
- Plain pockets with rounded corners and hidden pen opening on left pocket
- Hidden heavy-duty YKK® zipper front
- Scalloped flaps with hook and loop closure
- Permanent silicone creases, two in front and three in the back
- Full Badge sling and tab with metal eyelets
- Seven button placket front
- Topstitched and cross stitched epaulets
- Fitted pattern with extra long tail
- "UPF 40" protection
- Machine wash or dry clean

\* XL Sleeves available  
38/39" Call for availability

#### Long Sleeve Features:

- Hidden heavy-duty YKK® zipper front on sport collar shirts only
- Reinforced elbow patch
- Two button cuff

#### Shared Features:

- Fabric: 74% Polyester / 24% Wool / 2% Lycra, 9.5 oz. per linear yd.; Plain weave
- Sport collar and satin-lined yolk
- Pleated pockets with mitered corners and hidden pen opening on left pocket
- Scalloped flaps with hook and loop closure
- Permanent silicone creases, two in front and three in the back
- Hidden heavy-duty YKK® zipper front
- Full Badge sling and tab with metal eyelets
- Seven button placket front
- Topstitched and cross stitched epaulets
- Fitted pattern with extra long tail
- "UPF 40" protection
- Machine wash or dry clean

#### Long Sleeve Features:

- Banded collar and satin-lined yolk
- Two button adjustable cuffs with diamond sleeve placket

Proflex™ Short Sleeve California Shirt size charts **B** **D**  
Men's 11125 Women's W11125

Proflex™ Long Sleeve California Shirt size charts **A2** **C2** \*no XXS  
Men's Banded Collar 11145 Women's W11145  
Men's Sport Collar 11135

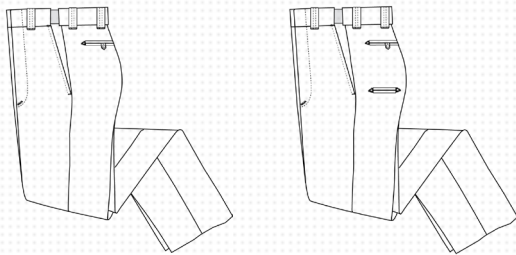
Proflex™ Short Sleeve National Shirt size charts **A2** **C2**  
Men's 11131 Women's W11131

Proflex™ Long Sleeve National Shirt size charts **B** **D**  
Men's 11121 Women's W11121

OUR PROFLEX™ UNIFORM TROUSERS ARE ENGINEERED TO GIVE YOU 15% STRETCH AND ARE FINISHED WITH DRYTEX™ TO PROVIDE YOU WITH MOISTURE CONTROL, WRINKLE PROTECTION AND STAIN RELEASE PROPERTIES.



**PROFLEX™ 4 POCKET / 6 POCKET TROUSERS**



**Shared Features:**

- Fabric: 74% Polyester / 24% Wool / 2% Lycra; 12.5 oz per linear yd., Serge weave
- Two inch waistband with Flexgrip retention system and Ban-Roll
- Self-adjusting expandable action waist
- One inch belt loops
- Two side quarter top pockets
- Two side internal vault pockets (inside quarter top pockets)
- Two top stitched hip pockets
- Triangle bartacks
- French fly with heavy-duty YKK® zipper
- Front and back silicone creases
- Split seam tailored construction
- Comfort fit pattern to accommodate athletic builds
- Machine wash or dry clean

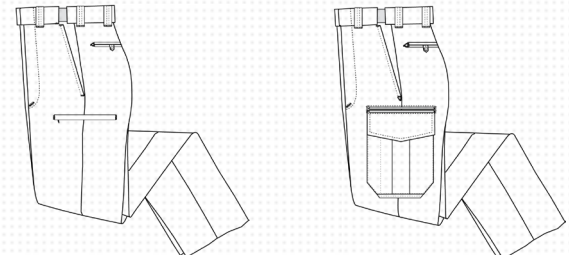
**Six Pocket Features:**

- Two Topstitched flashlight pockets

Four Pocket Proflex™ Trousers size chart [E](#) [F](#)  
Men's 10121 Women's W10121  
Six Pocket Proflex™ Trousers size chart [E](#) [F](#)  
Men's 10131 Women's W10131



**PROFLEX™ INTERNAL/EXTERNAL CARGO TROUSERS**



**Shared Features:**

- Fabric: 74% Polyester / 24% Wool / 2% Lycra; 12.5 oz per linear yd., Serge weave
- Two inch waistband with Flexgrip retention system and Ban-Roll
- Self-adjusting expandable action waist
- One inch belt loops
- Two side quarter top pockets
- Two side internal vault pockets (inside quarter top pockets)
- Two top stitched hip pockets
- Triangle bartacks
- French fly with heavy-duty YKK® zipper
- Front and back silicone creases
- Split seam tailored construction
- Comfort fit pattern to accommodate athletic builds
- Machine wash or dry clean

**Internal Features:**

- Two internal hidden zippered cargo pockets

**External Features:**

- Two side 5-in-1 cargo pockets (1 internal & 1 external)

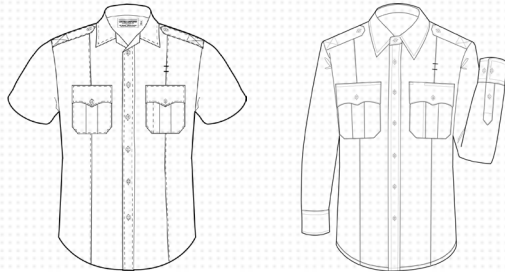
Proflex™ 8 Pocket Internal Cargo Trousers size chart [E](#) [F](#)  
Men's 10126 Women's W10126  
Proflex™ 8 Pocket External Cargo Trousers size chart [E](#) [F](#)  
Men's 10129 Women's W10129

OUR POLYFLEX™ UNIFORMS ARE MADE FOR EASY CARE AND ARE FINISHED WITH DRYTEX™ TO PROVIDE YOU WITH MOISTURE CONTROL, WRINKLE PROTECTION AND STAIN RELEASE PROPERTIES. POLYFLEX™ OFFERS MORE PROTECTION THAN THE STANDARD POLYESTER UNIFORMS AND QUALITY CONSTRUCTION GUARANTEES THAT THESE UNIFORMS WILL BE WITH YOU FOR A LONG TIME.

3



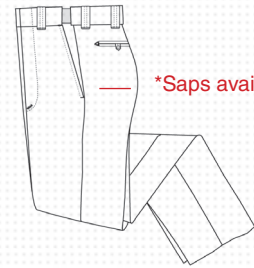
**POLYFLEX™ SHORT/LONG SLEEVE SHIRT**



- Fabric: 100% Polyester, 9 oz per linear yd.; Poplin weave
- Sports collar with permanent stays
- Double Yolk Pleated pockets with mitered corners and hidden pen opening on left pocket
- Permanent sewn-in creases, two in front and three in the back
- Scalloped flaps with hook and loop closure
- Full Badge sling
- Seven button placket front
- Hidden heavy-duty YKK® zippered front
- Melamine buttons
- Topstitched and cross stitched epaulets
- Fitted pattern with extra long tail
- Side seam mic. cord panels
- Gusseted mesh underarm panels ample breathability
- Machine wash or dry clean



**POLYFLEX™ FOUR POCKET TROUSERS\***



\*Saps available on request

- Fabric: 100% Polyester, 12.5 oz per linear yd.; Serge weave
- 2 in waistband with Flexgrip™ retention system and Ban-roll
- Self-adjusting expandable action waist
- 3/4 in. belt loops
- 2 side quarter-top pockets
- 2 top-stitched hip pockets
- Triangle bartacks at stress points
- French fly with heavy-duty YKK® zipper
- Split seam tailored construction
- Comfort fit to accommodate athletic builds
- Machine wash or dry clean

**Polyflex™ Short Sleeve Shirt**

Men's Navy	11801
Women's Navy	W11801
Men's White	11803
Women's White	W11803

**Polyflex™ Long Sleeve Shirt**

Men's Navy	11901
Women's Navy	W11901
Men's White	11903
Women's White	W11903

**Polyflex™ Four Pocket Trousers**

Men's	10221
Women's	W10221

size chart [E](#) [F](#)

size charts [B2](#)  
\*no XXS

size charts [A2](#)  
\*no XXS

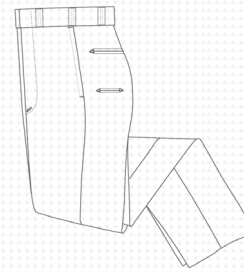
OUR 100% WORSTED WOOL LAPD SHIRTS AND TROUSERS ARE TAILORED TO THE SPECIFICATIONS OF THE LOS ANGELES POLICE DEPARTMENT. WE PROVIDE EVERYTHING THE DEPARTMENT NEEDS IN A HEAVY DUTY UNIFORM THAT REQUIRES MOBILITY AND DURABILITY SO YOUR UNIFORM WILL LOOK NICE ALL DAY LONG AND YOU WONT HAVE TO WORRY ABOUT TEARING.



**100% WORSTED WOOL LAPD SHORT/LONG SLEEVE SHIRT**



**100% WORSTED WOOL SIX POCKET TROUSERS**



**Shared Features:**

- Fabric: 100% Worsted Wool, 10.5 oz per square yard; plain weave
- 100% Worsted Wool, 17.5 oz per square yard; serge weave\*
- Sport collar with permanent collar stays
- Collar band and yolk lined with high luster satin
- Plain pockets with rounded corners
- Scalloped flaps with hook and loop closure
- Hidden pen opening on left pocket
- Hidden heavy-duty YKK® zipper front
- Badge holder with metal eyelets
- Placket front with melamine buttons
- Made to accommodate metal buttons
- Top-stitched and cross-stitched epaulets
- Double needle stitching throughout entire shirt
- Fitted pattern with extra long tail helps keep your shirt tucked in
- Machine wash or dry clean

\*Men's only

- Fabric: 100% Worsted Wool, 10 oz. per sq. yd. / 17.5 oz per linear yd., Serge weave
- Two inch waistband with Flexgrip retention system and Ban-roll
- Two side seam double tipped pockets
- Two top-stitched hip pockets
- Two top-stitched billy pockets
- Triangle bartacks
- Watch pocket
- Fully lined seat
- French fly with auto-lock brass zipper
- Split seam tailored construction
- Comfort fit pattern to accommodate athletic builds

**Long Sleeve Features:**

- Banded collar with permanent collar stays
- Badge holder with metal eyelets
- Reinforced elbow patch for increased durability
- 2 button adjustable cuffs

100% Wool LAPD Short Sleeve Shirt  
Men's Plain Weave Navy 11000  
Women's Plain Weave Navy W11000  
Men's Serge Weave 11010

100% Wool LAPD Long Sleeve Shirt  
Men's Plain Weave Navy 11001  
Women's Plain Weave Navy W11001  
Men's Serge Weave 11011

100% Worsted Wool Six Pocket Trousers  
Men's Navy 10000  
Women's Navy W10000



## 100% NYLON PERFECT STORM DUTY JACKET F1006



The uniquely designed Perfect Storm Jacket has everything you need to rough the stormy weather. Attachable high-visibility panels let onlookers know where you are as well as who you are. When you're not on duty, stuff the panels up for a clean, normal look.

- Fabric: 100% Water and windproof Nylon
- Treated with Climatact™ for complete wind and water resistance
- 2-way bellows fleece lined, hand-warming pockets
- Inside storage pockets
- Heavy-duty YKK® zipper
- Micro Fleece zip out liner
- 3 fully concealable customizable identification panels: 2 in front and 1 in back
- Includes Hi-Vis preprinted panels: SHERIFF, POLICE, SECURITY, and EMS available in sets of three
- Storable hood for rainy or cold weather
- Machine wash or dry clean
- Dark Navy - F1006DN, Black - F006BK

## 100% NYLON TACT GEN JACKET F1003



This industry standard Nylon Duty Jacket gives the wearer a slightly more professional look with a pleated front pocket construction and button-up front.

- Fabric: 100% Water resistant Nylon
- Treated with Aquatact™ for increased water resistance
- 3 inside pockets
- ThermoGuard™ Insulated zipout Liner
- Optional removable fur collar
- Badge tab
- Machine wash or dry clean
- Dark Navy - F1003DN, Black - F1003BK



## 100% NYLON WATERPROOF DUTY JACKET 5255/5255NY



Designed for the NYPD, this duty jacket is made to provide the highest protection from the elements. Waterproof, breathable and windproof offering flexibility in different climates.

- Fabric: 100% waterproof Nylon Tactel
- 2-way zippered front with storm flaps and snap closure
- Zip-out soft shell liner with patch pockets
- Side vents with 10 in. waterproof zippers and elasticized snap tabs
- Dual function patch front pockets with side fleece-lined handwarmer pockets
- Two concealable reflective safety tabs on front pockets
- 2 front hidden welt pockets with water proof zippers
- 2 inside zippered patch pockets
- Removable waterproof hood
- 1 1/2 in. cuffs with hook and loop closure
- Customized solid and reflective printing available
- Dark Navy - 5255, Dark Navy W/NYPD - 5255NY

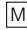
## ULTIMATE LIGHTWEIGHT REVERSIBLE RAINCOAT 5250/5250NY



Our ultimate lightweight reversible raincoat is Certified ANSI 107-2010 Class 3. Originally designed for The NYPD, it is constructed to withstand the hardest rain and sleet.

- Fabric: 100% waterproof Nylon Tactel navy shell; 100% waterproof Polyester oxford ANSI lime
- Dual layer windproof breathable
- 2-way zippered front with storm flaps and snap closure
- Side vents with 14 in. waterproof zippers and snap tabs
- Dual function front fleece-lined pockets with waterproof zippers on both navy and lime sides
- Top stitched and cross stitched epaulets
- Waterproof hood
- 1 1/2 in. cuffs with elastic
- Customized solid and reflective printing available
- Dark Navy/Lime - 5250, Dark Navy/Lime W/ NYPD - 5250NY



\*size chart   
for all jackets



### HANDCUFF CASES

- A. Single Handcuff Case TG003
- B. Double Handcuff Case TG002
- C. Single Hinged Case TG023

### MAGAZINE POUCHES

- D. 10mm / .45 Stacked TG004-1
- E. 9mm / .40 Staggered TG004-2
- F. 10mm / .40 Staggered TG004-3

### BATON HOLDERS

- G. PR24 Holder TG016
- H. 26" Expandable Holder TG009
- I. 21" Expandable Holder TG010

### FLASHLIGHT HOLDERS

- J. Stinger Mini Flashlight TG006
- K. AA Mini Flashlight TG008
- L. D-Cell Flashlight TG015
- M. Stinger Open Top TG024

### BELT KEEPERS (4 PACK)

- N. Belt Keepers TG017

### RADIO HOLDERS

- O. Standard Universal Holder TG019
- P. Swivel Universal Holder TG021
- Q. Adjustable Holder with Foot TG025

### KEY RING HOLDERS

- R. Standard Key Ring Holder TG022
- S. Silent Key Ring TG014

### PEPPER SPRAY HOLDERS

- T. MK-3 Small Pepper Spray TG005-III
- U. MK-4 Large Pepper Spray TG005-IV

### POUCHES

- V. Latex Glove Pouch TG007
- W. Alarm Pouch TG012
- X. Pager / Glove Pouch TG013
- Y. Double Speed Loader TG018

### HOLSTERS

- Z. MK-9 Leg Holster TG020

### DUTY BELTS

- AA. Molded Nylon Duty Belt TG001
- AB. Liner Belt TG0001

# SIZE CHARTS

Men's Conversion Chart

	XS		S		M		L		XL		2XL		3XL	
NECK	13	13.5	14	14.5	15	15.5	16	16.5	17	17.5	18	18.5	19	19.5
CHEST	32	34	36	38	40	42	44	46	48	50	52	54	56	58
SLEEVE	31	32	32.5	33	33.5	34	34.5	35	35.5	36	36.5	37	37.5	38
WAIST	24	26	28	30	32	34	36	38	40	42	44	46	48	50

Women's Conversion Chart

	XS		S		M		L		XL		2XL	
	2	4	6	8	10	12	14	16	18	20	22	24
WAIST	24	25	26	27	28	29	31	33	35	37	39	41
HIP	33.25	34.25	35.25	36.25	37.25	39.25	41.25	43.25	45.25	47.25	49.25	51.25
THIGH	18.75	19.25	19.75	20.25	21.25	22.25	22.75	23.75	24.75	25.75	26.75	27.75
BUST	31	32	33	34	35	36	38	40	42	44	46	48
SLEEVE	28	28.5	29	29.5	30	30.5	31	31.5	32	32.5	33	33.5

A2 Men's Long Sleeve Shirts - Alpha sizing

	XS	S	M	L	XL	2XL	3XL	4XL	5XL	6XL
	13-13.5	14-14.5	15-15.5	16-16.5	17-17.5	18-18.5	19-20	21	22	23
32/33	•	•	•	•	•	•	•			
34/35		•	•	•	•	•	•	•	•	•
36/37			•	•	•	•	•	•	•	•
38					•	•	•	•	•	•

B Men's Short Sleeve Shirts

	14	14.5	15	15.5	16	16.5	17	17.5	18	18.5	19	20	21	22
	•	•	•	•	•	•	•	•	•	•	•	•	•	•

B2 Men's Short Sleeve Shirts - Alpha sizing

	XXS	XS	S	M	L	XL	2XL	3XL	4XL	5XL	6XL
	12-12.5	13-13.5	14-14.5	15-15.5	16-16.5	17-17.5	18-18.5	19-20	21	22	23
	•	•	•	•	•	•	•	•	•	•	•

C2 Women's Long Sleeve Shirts - Bust sizing

	Bust	30	32	34	36	38	40	42	44	46	48
30/31		•	•	•	•	•					
32/33				•	•	•	•	•	•	•	•
34								•	•	•	•

D Women's Short Sleeve Shirts

	30	32	34	36	38	40	42	44	46	48
	•	•	•	•	•	•	•	•	•	•

E Men's Trousers

	28	29	30	31	32	33	34	35	36	37	38	40
	•	•	•	•	•	•	•	•	•	•	•	•
	42	44	46	48	50	52	54	56	58	60	64	66
	•	•	•	•	•	•	•	•	•	•		

F Women's Trousers

	2	4	6	8	10	12	14	16	18	20	22	24	26	28	30
	•	•	•	•	•	•	•	•	•	•	•	•	•	•	•

M Jackets, Outerwear

	S	M	L	XL	2XL	3XL	4XL	5XL	6XL
	34-36	38-40	42-44	46-48	50-52	54-56	58-60	62-64	66-68
SHORT	•	•	•						
REGULAR	•	•	•	•	•	•	•	•	•
LONG	•	•	•	•	•	•	•	•	•

Duty Belts

	S	M	L	XL	2XL	3XL
	28-34	34-40	40-46	46-52	52-58	58-64



**UNITED UNIFORM  
MANUFACTURERS**



Professional Quality. Amazing Value.

**TACT SQUAD**

**(800) 858-6755**

250 N. Benjamin Dr.  
Corona, CA 92879  
www.tactsquad.com