



2020 EDITION

# MADE TO ORDER

SELECTION

 TACTSQUAD

  
UNITED UNIFORM  
MANUFACTURERS



Enclosed is our **Made To Order (MTO) Program** for Ike Jackets, Dress Coats and Motor Breeches. We also offer a complete **Custom Garment Program** which includes Suits, Shirts, Pants and Outerwear made to your specifications.

Some of our satisfied customers include:

San Francisco Fire Department  
New York Police Department  
McCallen Texas Police Department  
Los Angeles County Fire Department

Contact our Customer Service or Territory Representative for more information.

---

## About Us

We at Tact Squad/United Uniform Manufacturers are proud to say that our uniforms are among the most highly desirable consumer goods in the public safety and security market. We have gone to great lengths in providing our customers with products that are of the highest quality at the most affordable prices.

We offer an extensive line of products devoted to military, public safety and security professionals. We strive to meet the ever changing needs of those professionals and to ensure that they receive the quality customer service they deserve.



250 N. Benjamin Dr. | Corona, CA | 92879  
P: (800) 858-6755 | F: (888) 880-9116  
tactsquad.com



# IKE JACKETS

Ike Jackets are versatile and available in several types of fabrics & colors that compliment many of our stock trousers.



• *Zippered Front Ike Jacket*



• *Button Front Ike Jacket*

## Standard Features:

- Full Satin Lining
- Easy Button Access
- Peak Lapels
- Pleated/Scalloped Flap
- Pockets
- Underarm Sweat Shields
- Wool-felt Undercollar

## Fabric Options

100% Wool | 100% Polyester  
55% Poly / 45% Wool



## ZIPPERED FRONT IKE JACKET

### Color Options for Ike Jackets

Black, Forest Green, LAPD Navy, and Brown



STYLE	COLOR	FABRIC	WEAVE	WEIGHT	AVAILABILITY	SCALE
UM10505	LAPD NAVY	100% WOOL	SERGE	16.5-17OZ	MTO	K
UM10516	FOREST GREEN	100% WOOL	SERGE	16.5-17OZ	MTO	K
UM10513	LAPD NAVY	100% WOOL	ELASTIQUE	14-14.4OZ	MTO	K
UM10500	CHP SPEC	55/45 POLY/WOOL	ELASTIQUE	16.5-17OZ	STOCK	K
UM10501	FOREST GREEN	55/45 POLY/WOOL	ELASTIQUE	16.5-17OZ	MTO	K
UM10502	CDCR SPEC	55/45 POLY/WOOL	ELASTIQUE	16.5-16.5OZ	MTO	K
UM10503	LAPD SPEC	55/45 POLY/WOOL	ELASTIQUE	12.5-13OZ	MTO	K
UM10504	BROWN	55/45 POLY/WOOL	ELASTIQUE	12.5-13OZ	MTO	K
UM10515	LAPD NAVY	55/45 POLY/WOOL	SERGE	19.5-20OZ	MTO	K
UM10506	LAPD NAVY	100% POLYESTER	ELASTIQUE	14-14.5OZ	MTO	K
UM10530	BLACK	100% POLYESTER	ELASTIQUE	16-16.5OZ	MTO	K

## BUTTON FRONT IKE JACKET

### Color Options for Ike Jackets

Black, Forest Green, LAPD Navy, and Brown

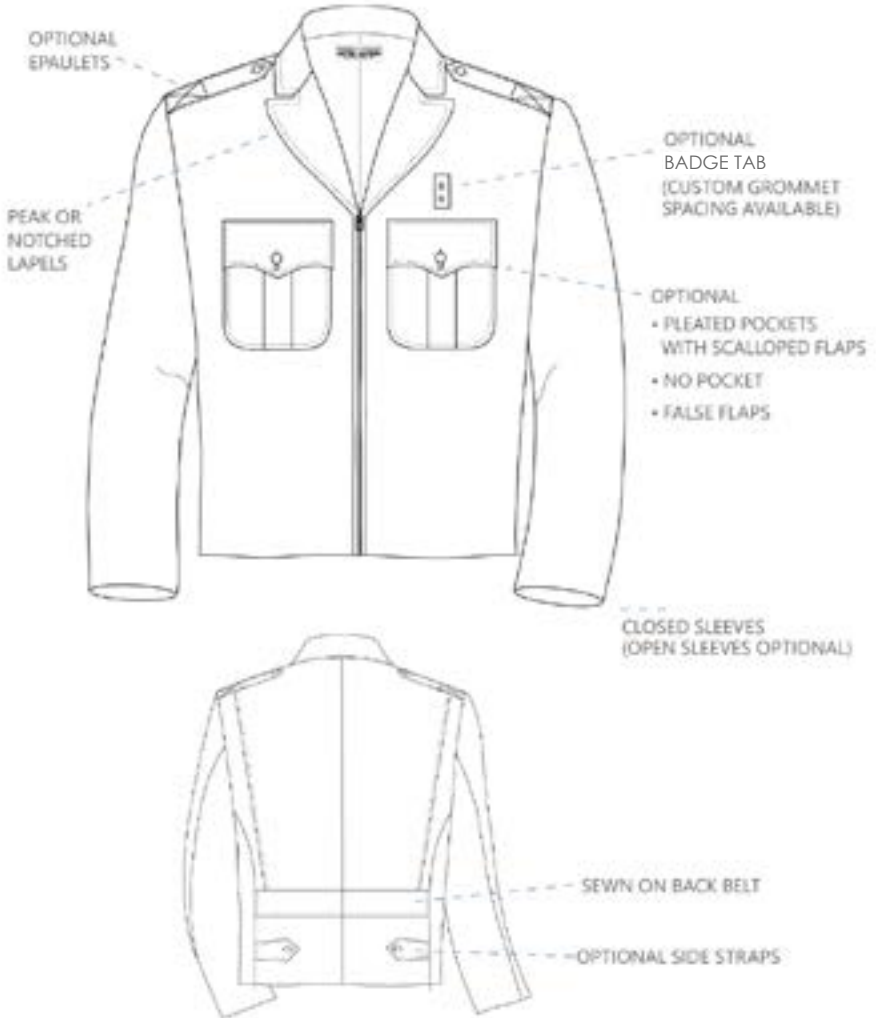


STYLE	COLOR	FABRIC	WEAVE	WEIGHT	AVAILABILITY	SCALE
UM10523	LAPD NAVY	100% WOOL	SERGE	16.5-17OZ	MTO	K
UM10529	BLACK	100% WOOL	SERGE	16.5-17OZ	MTO	K
UM10509	FOREST GREEN	55/45 POLY/WOOL	ELASTIQUE	12.5-13OZ	MTO	K
UM10510	LAPD NAVY	55/45 POLY/WOOL	ELASTIQUE	16.5-17OZ	MTO	K
UM10526	BROWN	55/45 POLY/WOOL	ELASTIQUE	16.5-17OZ	MTO	K
UM10538	BLACK	55/45 POLY/WOOL	ELASTIQUE	12.5-13OZ	MTO	K
UM10539	LAPD NAVY	55/45 POLY/WOOL	SERGE	16-16.5OZ	MTO	K
UM10511	LAPD NAVY	100% POLYESTER	ELASTIQUE	14-14.5OZ	MTO	K
UM10533	BLACK	100% POLYESTER	ELASTIQUE	14-14.5OZ	MTO	K



# ZIPPERED FRONT IKE JACKETS

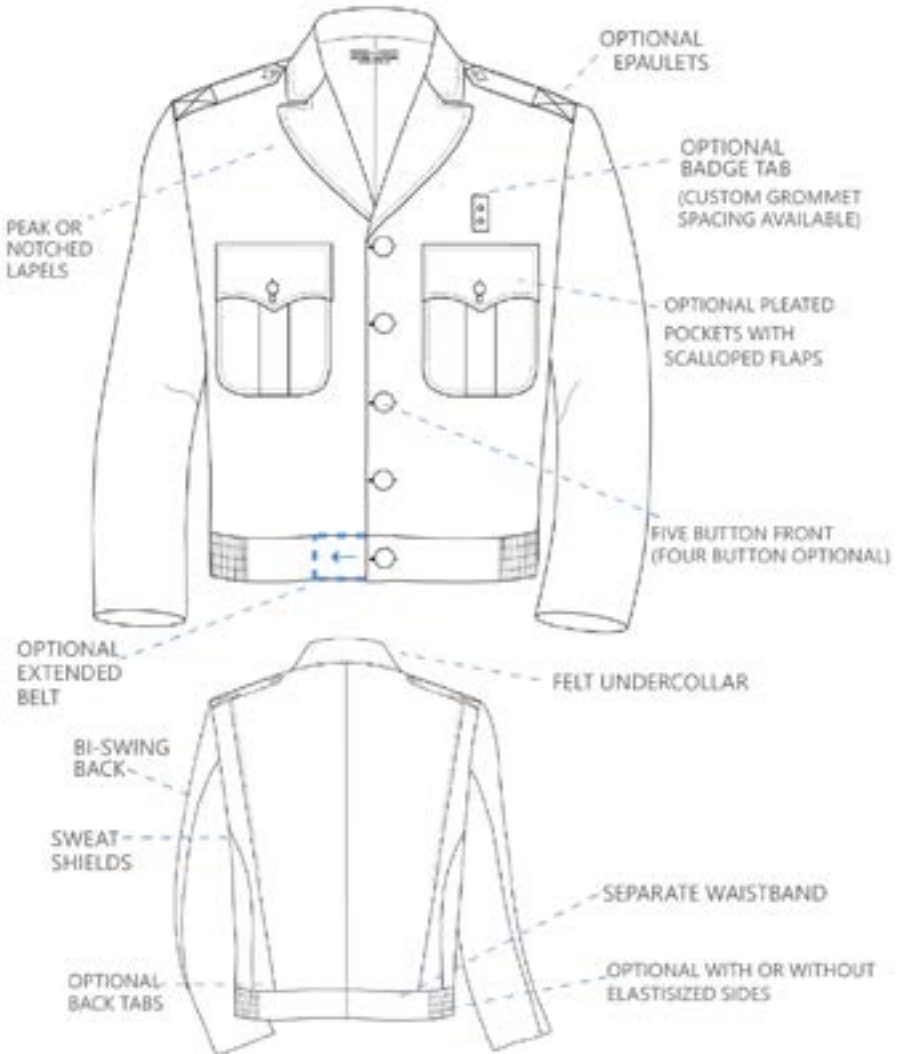
COMES AS SHOWN IF NOT SPECIFIED





# BUTTON FRONT IKE JACKETS

COMES AS SHOWN IF NOT SPECIFIED





## DRESS COATS

Dress Coats are available in many fabrics and colors to compliment our stock trousers.



• *Single Breasted Dress Coat*



• *Double Breasted Dress Coat*

### STANDARD FEATURES:

- Full Satin Lining
- Easy Button Access
- Notched or Peak Lapels
- Lower False Pockets
- Underarm Sweat Shields
- Wool-felt undercoat
- Cross-stitched epaulets
- 4/5 or 6/8 Button Fronts
- 2 top front pleated/scalloped pockets on a single breasted coat.

### Fabric Options

100% Wool | 100% Polyester  
55% Poly / 45% Wool





## SINGLE BREASTED DRESS COAT

### Color Options for Dress Coats

Black, Forest Green, LAPD Navy, and Brown



STYLE	COLOR	FABRIC	WEAVE	WEIGHT	AVAILABILITY	SCALE
UM10603	LAPD NAVY	55/45 POLY/WOOL	ELASTIQUE	16.5-17OZ	MTO	K
UM10604	BLACK	55/45 POLY/WOOL	ELASTIQUE	16.5-17OZ	MTO	K
UM10600	LAPD NAVY	55/45 POLY/WOOL	SERGE	14-14.4OZ	MTO	K
UM10601	FOREST GREEN	55/45 POLY/WOOL	ELASTIQUE	16.5-17OZ	MTO	K
UM10605	LAPD NAVY	55/45 POLY/WOOL	ELASTIQUE	16.5-17OZ	MTO	K
UM10606	BROWN	100% WOOL	SERGE	16.5-16.5OZ	MTO	K
UM10602	LAPD NAVY	100% POLYESTER	ELASTIQUE	12.5-13OZ	MTO	K
UM10609	BLACK	55/45 POLY/WOOL	ELASTIQUE	16.5-17OZ	MTO	K

## DOUBLE BREASTED DRESS COAT

### Color Options for Dress Coats

Black, Forest Green, LAPD Navy, and Brown



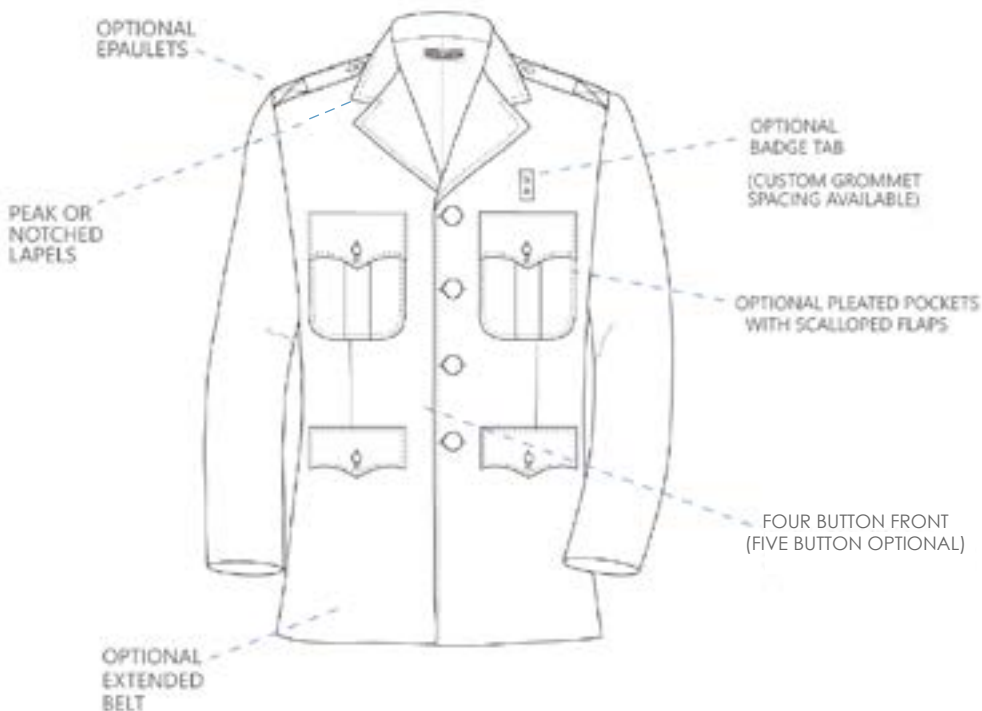
STYLE	COLOR	FABRIC	WEAVE	WEIGHT	AVAILABILITY	SCALE
UM10703	LAPD NAVY	100% WOOL	SERGE	16.5-17OZ	MTO	K
UM10704	BLACK	100% WOOL	SERGE	16.5-17OZ	MTO	K
UM10701	LAPD NAVY	55%POLY/45%WOOL	ELASTIQUE	14-14.4OZ	MTO	K
UM10700	LAPD NAVY	55/45 POLY/WOOL	SERGE	16.5-17OZ	MTO	K
UM10705	BLACK	55/45 POLY/WOOL	GABARDINE	16.5-17OZ	MTO	K
UM10702	LAPD NAVY	100% POLYESTER	ELASTIQUE	16.5-16.5OZ	MTO	K





# SINGLE BREASTED DRESS COAT

COMES AS SHOWN IF NOT SPECIFIED





# DOUBLE BREASTED DRESS COAT

COMES AS SHOWN IF NOT SPECIFIED





# MOTOR BREECHES

are available in many fabrics and colors to compliment any Uniform Program.



## Fabric Options

100% Wool | 100% Polyester  
55% Poly / 45% Wool  
91% / 9% Nylon/Lycra Blend

Contact your Customer Service Representative  
about our In-Stock Motor Breech Program.

We offer our Four Way Stretch Motor Breech **UM10365**  
and our Elastique Motor Breeches (**UM10322, UM10326**)



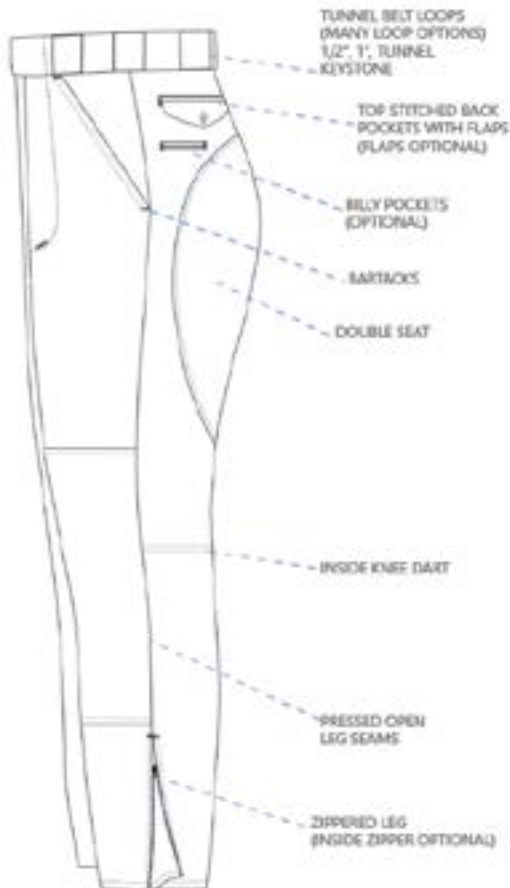
# MOTOR BREECHES

## Color Options for Motor Breeches

Black, Forest Green, LAPD Navy, Brown and Tan



STYLE	COLOR	FABRIC	WEAVE	WEIGHT	AVAILABILITY	SCALE
UM10300	SILVER TAN	100% WOOL	ELASTIQUE	16.5-17OZ	MTO	J
UM10301	SILVER TAN	100% WOOL	ELASTIQUE	16.5-17OZ	MTO	J
UM10303	LAPD NAVY	100% WOOL	ELASTIQUE	14-14.4OZ	MTO	J
UM10313	LAPD NAVY	55/45 POLY/WOOL	ELASTIQUE	16.5-17OZ	MTO	J
UM10315	FOREST GREEN	55/45 POLY/WOOL	ELASTIQUE	16.5-17OZ	MTO	J
UM10322	LAPD NAVY	100% POLYESTER	ELASTIQUE	16.5-16.5OZ	MTO	J
UM10326	BLACK	100% POLYESTER	ELASTIQUE	12.5-13OZ	MTO	J
UM10365	LAPD NAVY	NYLON/LYCRA® BLEND	ELASTIQUE	12.5-13OZ	MTO	J
UM10366	BLACK	NYLON/LYCRA® BLEND	ELASTIQUE	19.5-20OZ	MTO	J
UM10367	FOREST GREEN	NYLON/LYCRA® BLEND	ELASTIQUE	14-14.5OZ	MTO	J



## STANDARD FEATURES

- French-fly with auto-lock brass zipper
- Split seam tailored construction
- Double knee and seat
- 10 inch zippered leg gussets
- Optional elastic stirrups
- Comfort pattern to accommodate athletic build
- 2 inch FlexGrip waistband with Snug-Tex
- Optional Ban-roll
- Tunnel Belt loops
- 2 full top pockets
- Straight bartacks
- Variety of braids available



**MADE TO ORDER (MTO) ITEMS NOT SUBJECT TO QUANTITY PRICING**

### Made-to-Order and Customization Options

We offer a versatile Made-to-order service to enable you to design a uniform to your specifications with low minimums. We inventory an extensive selection of fabrics in many colors that can be used to create your unique custom style.

Our dress coats, dress jackets, and motor breeches are made-to-order with no minimums and a short production lead time. Please contact our customer service department for additional pricing and information.

- Install Emblem
- Install Zippers
- Badge reinforcement
- Custom badge tabs
- Metal button accommodation
- Convert long sleeve to short sleeve
- Install reflective stripes on sleeves
- Install cloth or woven braid on sleeves
- Custom printing in reflective, black, white, or yellow
- Name strips for embroidery

**Trousers:**

- Install cloth or woven braid
- Install "Billy" pockets
- Install elastic stirrups
- Install leather to pocket welts
- Hem trousers
- Add lint track creases
- Convert trousers to shorts

**Embroidery:**

- Custom designing available
- Embroidery on shirts, coats, or hats

### Made-to-Order Color Options

United Uniform Manufacturers offer a wide array of color options for those looking for made-to-order garments. If you do not see a color below, contact our customer service to see if we can accommodate your needs.



